

## AMBP Rabbit mAb

Catalog No: #56224

Package Size: #56224-1 50ul #56224-2 100ul

Orders: order@signalwayantibody.com

Support: tech@signalwayantibody.com

## Description

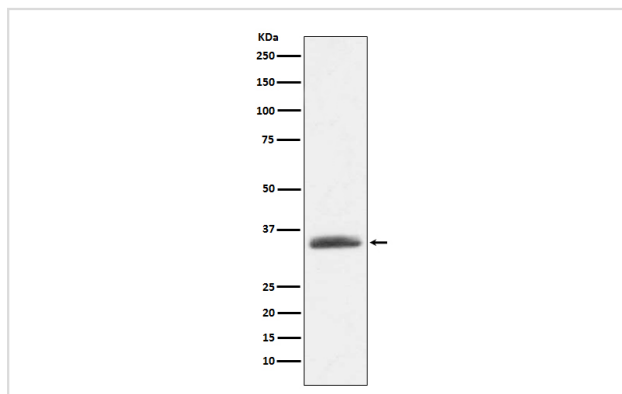
Product Name	AMBP Rabbit mAb
Host Species	Rabbit
Clonality	Monoclonal
Isotype	Rabbit IgG
Purification	Affinity-chromatography
Applications	WB IHC
Species Reactivity	Human
Specificity	AMBP Antibody detects endogenous levels of total AMBP
Immunogen Description	A synthesized peptide derived from human AMBP
Other Names	A1M; alpha 1 microglobulin bikunin; Alpha 1 microglycoprotein; AMBP; Bikunin; EDC1; HI30;
Accession No.	Uniprot:P02760
Uniprot	P02760
Calculated MW	39kDa
Formulation	Rabbit IgG in phosphate buffered saline , pH 7.4, 150mM NaCl, 0.02% sodium azide and 50% glycerol.
Storage	Store at +4Λ C short term. Store at -20Λ C long term. Avoid freeze / thaw cycle.

## Application Details

WB: 1:500~1:2000

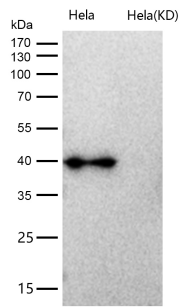
IHC: 1:50~1:200

## Images



Western blot analysis of AMBP expression in human plasma lysate.

All lanes use the Antibody at 1:1K dilution for 1 hour at room temperature.



## Product Description

Inter-alpha-trypsin inhibitor inhibits trypsin, plasmin, and lysosomal granulocytic elastase. Inhibits calcium oxalate crystallization. Trypstatin is a trypsin inhibitor.

Note: This product is for in vitro research use only