

CRMP2 Rabbit mAb

Catalog No: #56227

Package Size: #56227-1 50ul #56227-2 100ul

Orders: order@signalwayantibody.com

Support: tech@signalwayantibody.com

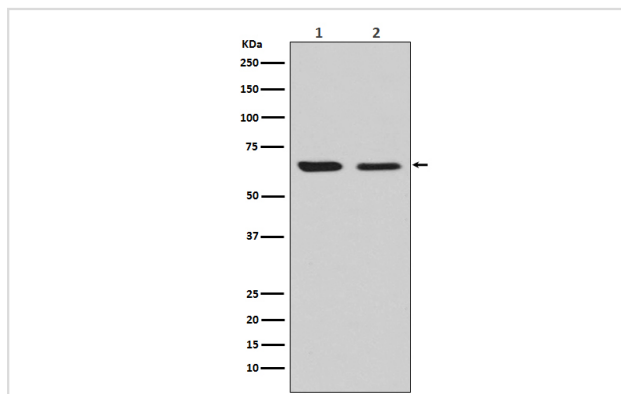
Description

Product Name	CRMP2 Rabbit mAb
Host Species	Rabbit
Clonality	Monoclonal
Isotype	Rabbit IgG
Purification	Affinity-chromatography
Applications	WB IHC ICC/IF IP FC
Species Reactivity	Human Mouse Rat
Specificity	CRMP2 Antibody detects endogenous levels of total CRMP2
Immunogen Description	A synthesized peptide derived from human CRMP2
Other Names	DRP2; CRMP-2; N2A3; Unc-33-like phosphoprotein 2; ULIP-2; DPYSL2; CRMP2; ULIP2; Musunc33; TOAD64;
Accession No.	Uniprot:Q16555
Uniprot	Q16555
Calculated MW	62kDa
Formulation	Rabbit IgG in phosphate buffered saline , pH 7.4, 150mM NaCl, 0.02% sodium azide and 50% glycerol.
Storage	Store at +4 Λ C short term. Store at -20 Λ C long term. Avoid freeze / thaw cycle.

Application Details

WB:1:1000~1:5000IHC:1:50~1:200ICC/IF:1:50~1:200IP:1:50FC:1:100

Images



Western blot analysis of CRMP2 expression in (1) U87-MG cell lysate; (2) NIH/3T3 cell lysate.

Product Description

Necessary for signaling by class 3 semaphorins and subsequent remodeling of the cytoskeleton. Plays a role in axon guidance, neuronal growth cone collapse and cell migration.

Note: This product is for in vitro research use only