

Ran Rabbit mAb

Catalog No: #56233

Package Size: #56233-1 50ul #56233-2 100ul

Orders: order@signalwayantibody.com

Support: tech@signalwayantibody.com

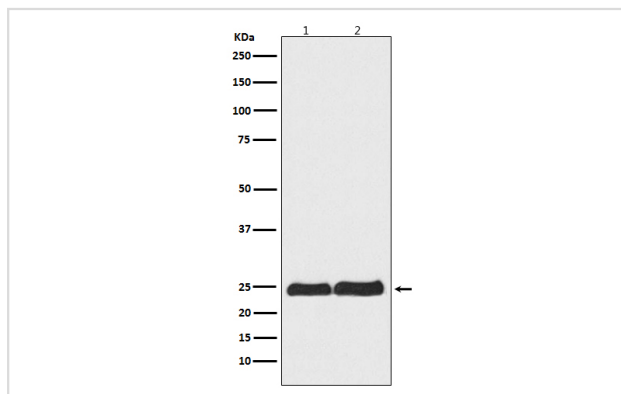
Description

Product Name	Ran Rabbit mAb
Host Species	Rabbit
Clonality	Monoclonal
Isotype	Rabbit IgG
Purification	Affinity-chromatography
Applications	WB ICC/IF IP FC
Species Reactivity	Human Mouse Rat
Specificity	Ran Antibody detects endogenous levels of total Ran
Immunogen Description	A synthesized peptide derived from human Ran
Other Names	ARA24; Gsp1; GTPase Ran; Guanosine triphosphatase Ran; LPS; RAN member RAS oncogene family; RanGTPase; Ras like protein TC4; Ras related nuclear protein; Ras-like protein TC4; RASL2 8;
Accession No.	Uniprot:P62826
Uniprot	P62826
Calculated MW	24kDa
Formulation	Rabbit IgG in phosphate buffered saline , pH 7.4, 150mM NaCl, 0.02% sodium azide and 50% glycerol.
Storage	Store at +4 Λ C short term. Store at -20 Λ C long term. Avoid freeze / thaw cycle.

Application Details

WB:1:500~1:2000 ICC/IF:1:50~1:200 IP:1:50 FC:1:100

Images



Western blot analysis of Ran expression in (1) HeLa cell lysate; (2) RAW264.7 cell lysate.

Product Description

GTP-binding protein involved in nucleocytoplasmic transport. Required for the import of protein into the nucleus and also for RNA export. Involved in chromatin condensation and control of cell cycle (By similarity).

Note: This product is for in vitro research use only