

Emerin Rabbit mAb

Catalog No: #56235

Package Size: #56235-1 50ul #56235-2 100ul

Orders: order@signalwayantibody.com

Support: tech@signalwayantibody.com

Description

Product Name	Emerin Rabbit mAb
Host Species	Rabbit
Clonality	Monoclonal
Isotype	Rabbit IgG
Purification	Affinity-chromatography
Applications	WB IHC ICC/IF
Species Reactivity	Human Mouse Rat
Specificity	Emerin Antibody detects endogenous levels of total Emerin
Immunogen Description	A synthesized peptide derived from human Emerin
Other Names	EDMD; Emd; Emerin; Emery Dreifuss muscular dystrophy; STA;
Accession No.	Uniprot:P50402
Uniprot	P50402
Calculated MW	29kDa
Formulation	Rabbit IgG in phosphate buffered saline , pH 7.4, 150mM NaCl, 0.02% sodium azide and 50% glycerol.
Storage	Store at +4 Λ C short term. Store at -20 Λ C long term. Avoid freeze / thaw cycle.

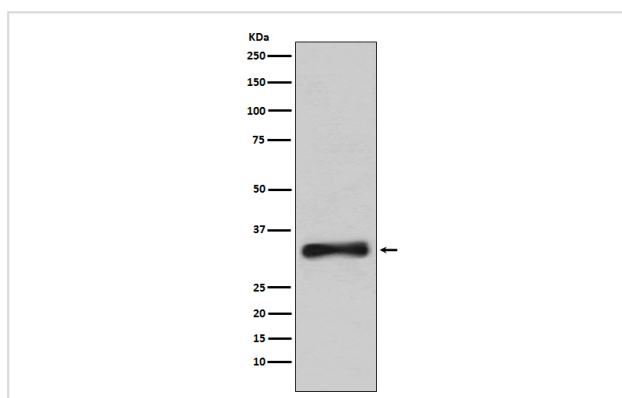
Application Details

WB: 1:500~1:2000

IHC: 1:50~1:200

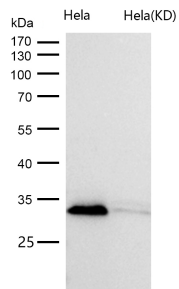
ICC/IF: 1:50~1:200

Images



Western blot analysis of Emerin expression in 293T cell lysate.

All lanes use the Antibody at 1:1K dilution for 1 hour at room temperature.



Product Description

Emerin may regulate gene expression through binding to other transcriptional regulators. Emerin binds to β -catenin and inhibits its nuclear accumulation. Recent studies demonstrate that Emerin is required for HIV-1 infectivity.

Note: This product is for in vitro research use only