

## GAL4 Rabbit mAb

Catalog No: #56241

Package Size: #56241-1 50ul #56241-2 100ul

Orders: order@signalwayantibody.com

Support: tech@signalwayantibody.com

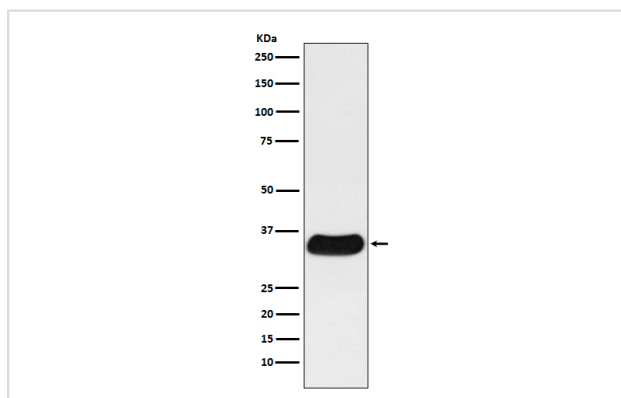
## Description

Product Name	GAL4 Rabbit mAb
Host Species	Rabbit
Clonality	Monoclonal
Isotype	Rabbit IgG
Purification	Affinity-chromatography
Applications	WB IHC
Species Reactivity	Human Rat
Specificity	GAL4 Antibody detects endogenous levels of total GAL4
Immunogen Description	A synthesized peptide derived from human GAL4
Other Names	L36LBP; Lactose binding lectin 4; Lectin galactoside binding soluble 4; LGALS4;
Accession No.	Uniprot:P56470
Uniprot	P56470
Calculated MW	36kDa
Formulation	Rabbit IgG in phosphate buffered saline , pH 7.4, 150mM NaCl, 0.02% sodium azide and 50% glycerol.
Storage	Store at +4 $\Lambda$ C short term. Store at -20 $\Lambda$ C long term. Avoid freeze / thaw cycle.

## Application Details

WB:1:500~1:2000IHC:1:50~1:200

## Images



Western blot analysis of GAL4 expression in rat small intestine lysate.

## Product Description

Galectin that binds lactose and a related range of sugars. May be involved in the assembly of adherens junctions.

---

Note: This product is for in vitro research use only