

Orai1 Rabbit mAb

Catalog No: #56242

Package Size: #56242-1 50ul #56242-2 100ul

Orders: order@signalwayantibody.com

Support: tech@signalwayantibody.com

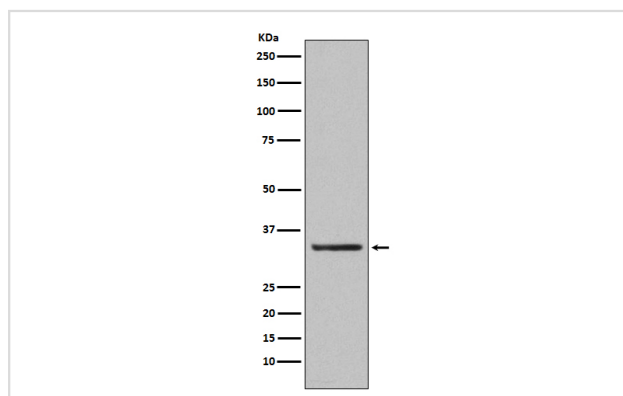
Description

Product Name	Orai1 Rabbit mAb
Host Species	Rabbit
Clonality	Monoclonal
Isotype	Rabbit IgG
Purification	Affinity-chromatography
Applications	WB
Species Reactivity	Human
Specificity	Orai1 Antibody detects endogenous levels of total Orai1
Immunogen Description	A synthesized peptide derived from human Orai1
Other Names	CRACM1; Orai 1; ORAI calcium release activated calcium modulator 1; orai1; ORAT1; Protein orai 1; TMEM142A;
Accession No.	Uniprot:Q96D31
Uniprot	Q96D31
Calculated MW	33kDa
Formulation	Rabbit IgG in phosphate buffered saline , pH 7.4, 150mM NaCl, 0.02% sodium azide and 50% glycerol.
Storage	Store at +4ℳ C short term. Store at -20ℳ C long term. Avoid freeze / thaw cycle.

Application Details

WB:1:500~1:2000

Images



Western blot analysis of Orai1 expression in human platelet lysate.

Product Description

Ca(2+) release-activated Ca(2+) (CRAC) channel subunit which mediates Ca(2+) influx following depletion of intracellular Ca(2+) stores and channel activation by the Ca(2+) sensor, STIM1. CRAC channels are the main pathway for Ca(2+) influx in T-cells and promote the immune response to pathogens by activating the transcription factor NFAT.

Note: This product is for in vitro research use only