

Atg4A Rabbit mAb

Catalog No: #56246

Package Size: #56246-1 50ul #56246-2 100ul

Orders: order@signalwayantibody.com

Support: tech@signalwayantibody.com

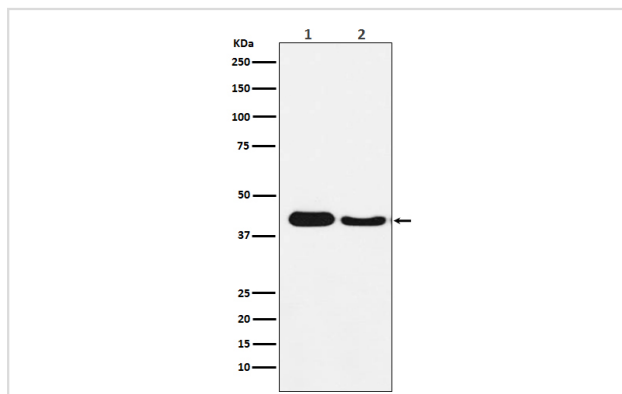
Description

Product Name	Atg4A Rabbit mAb
Host Species	Rabbit
Clonality	Monoclonal
Isotype	Rabbit IgG
Purification	Affinity-chromatography
Applications	WB IHC IP
Species Reactivity	Human Mouse Rat
Specificity	Atg4A Antibody detects endogenous levels of total Atg4A
Immunogen Description	A synthesized peptide derived from human Atg4A
Other Names	Apg4a; ATG4A; Atg4a1; AUT like 2 cysteine endopeptidase; Autl2; Autophagin 2; Autophagin-2; Autophagy related 4A cysteine peptidase;
Accession No.	Uniprot:Q8WYN0
Uniprot	Q8WYN0
Calculated MW	45kDa
Formulation	Rabbit IgG in phosphate buffered saline , pH 7.4, 150mM NaCl, 0.02% sodium azide and 50% glycerol.
Storage	Store at +4 Λ C short term. Store at -20 Λ C long term. Avoid freeze / thaw cycle.

Application Details

WB:1:500~1:2000IHC:1:50~1:200IP:1:50

Images



Western blot analysis of Atg4A expression in (1) HepG2 cell lysate; (2) Mouse brain lysate.

Product Description

The cysteine protease Atg4 is pivotal to autophagosome membrane generation and regulation. Atg4 primes the Atg8 homologue for lipidation by cleaving its carboxy terminus and exposing its glycine residue for E1-like enzyme Atg7. The Atg8 homologue is transferred to the E2-like enzyme Atg3 before forming the Atg8-PE conjugate. During later stages of autophagy, Atg4 can reverse this lipidation event by cleaving PE, thereby recycling the

Atg8 homologue.

Note: This product is for in vitro research use only