

PRAS40 Rabbit mAb

Catalog No: #56247

Package Size: #56247-1 50ul #56247-2 100ul

Orders: order@signalwayantibody.com

Support: tech@signalwayantibody.com

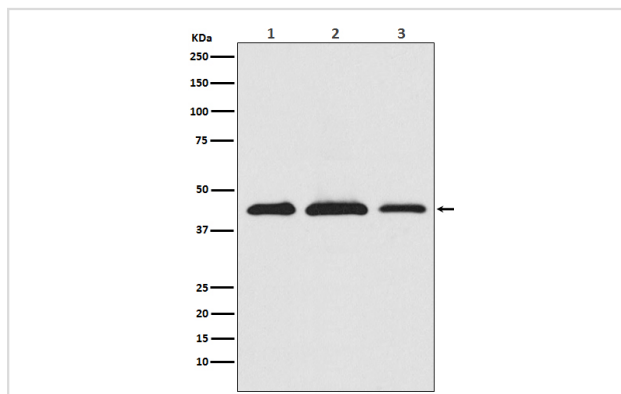
Description

Product Name	PRAS40 Rabbit mAb
Host Species	Rabbit
Clonality	Monoclonal
Isotype	Rabbit IgG
Purification	Affinity-chromatography
Applications	WB IP
Species Reactivity	Human Mouse Rat
Specificity	PRAS40 Antibody detects endogenous levels of total PRAS40
Immunogen Description	A synthesized peptide derived from human PRAS40
Other Names	40 kDa proline rich AKT substrate; AKT1 S1; Lobe; PRAS40; Proline rich akt substrate; Proline rich Akt substrate 40 kDa;
Accession No.	Uniprot:Q96B36
Uniprot	Q96B36
Calculated MW	40kDa
Formulation	Rabbit IgG in phosphate buffered saline , pH 7.4, 150mM NaCl, 0.02% sodium azide and 50% glycerol.
Storage	Store at +4Λ C short term. Store at -20Λ C long term. Avoid freeze / thaw cycle.

Application Details

WB:1:500~1:2000IP:1:50

Images



Western blot analysis of PRAS40 expression in (1) HeLa cell lysate; (2) RAW 264.7 cell lysate; (3) PC12 cell lysate.

Product Description

Many growth factors and hormones induce the phosphoinositide 3-kinase signaling pathway, which results in the activation of downstream effector proteins such as the serine/threonine kinase Akt. One known Akt substrate is a 40 kDa, proline-rich protein (PRAS40) that binds to 14-3-3 protein. PRAS40 also binds mTOR to transduce Akt signals to the mTOR complex.

Note: This product is for in vitro research use only