

CCR8 Rabbit mAb

Catalog No: #56248

Package Size: #56248-1 50ul #56248-2 100ul

Orders: order@signalwayantibody.com

Support: tech@signalwayantibody.com

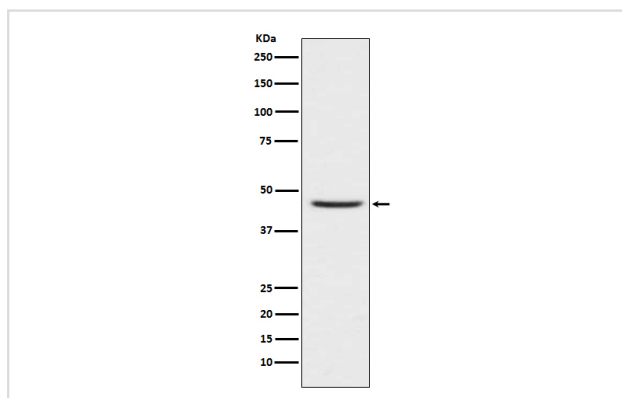
Description

Product Name	CCR8 Rabbit mAb
Host Species	Rabbit
Clonality	Monoclonal
Isotype	Rabbit IgG
Purification	Affinity-chromatography
Applications	WB ICC/IF
Species Reactivity	Human Mouse Rat
Specificity	CCR8 Antibody detects endogenous levels of total CCR8
Immunogen Description	A synthesized peptide derived from human CCR8
Other Names	CY6; TER1; CCR-8; CKRL1; CDw198; CMKBR8; GPRCY6; CMKBRL2; CC-CKR-8; TER1;
Accession No.	Uniprot:P51685
Uniprot	P51685
Calculated MW	41kDa
Formulation	Rabbit IgG in phosphate buffered saline , pH 7.4, 150mM NaCl, 0.02% sodium azide and 50% glycerol.
Storage	Store at +4 Λ C short term. Store at -20 Λ C long term. Avoid freeze / thaw cycle.

Application Details

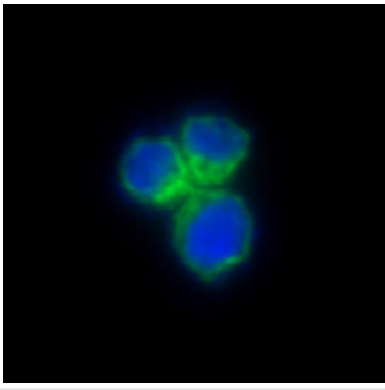
WB:1:500~1:1000 ICC/IF:1:50~1:200

Images



Western blot analysis of CCR8 expression in Jurkat cell lysate.

Immunofluorescent analysis of HeLa cells, using CCR8 Antibody .



Product Description

Receptor for the chemokine CCL1/SCYA1/I-309. May regulate monocyte chemotaxis and thymic cell line apoptosis. Alternative coreceptor with CD4 for HIV-1 infection.

Note: This product is for in vitro research use only