

Dynamin 1 Rabbit mAb

Catalog No: #56249

Package Size: #56249-1 50ul #56249-2 100ul

Orders: order@signalwayantibody.com

Support: tech@signalwayantibody.com

Description

Product Name	Dynamin 1 Rabbit mAb
Host Species	Rabbit
Clonality	Monoclonal
Isotype	Rabbit IgG
Purification	Affinity-chromatography
Applications	WB IHC ICC/IF
Species Reactivity	Human Mouse Rat
Specificity	Dynamin 1 Antibody detects endogenous levels of total Dynamin 1
Immunogen Description	A synthesized peptide derived from human Dynamin 1
Other Names	B dynamin; D100; DNM 1; DNM1; Dynamin; Dynamin1;
Accession No.	Uniprot:Q05193
Uniprot	Q05193
Calculated MW	97kDa
Formulation	Rabbit IgG in phosphate buffered saline , pH 7.4, 150mM NaCl, 0.02% sodium azide and 50% glycerol.
Storage	Store at +4Λ C short term. Store at -20Λ C long term. Avoid freeze / thaw cycle.

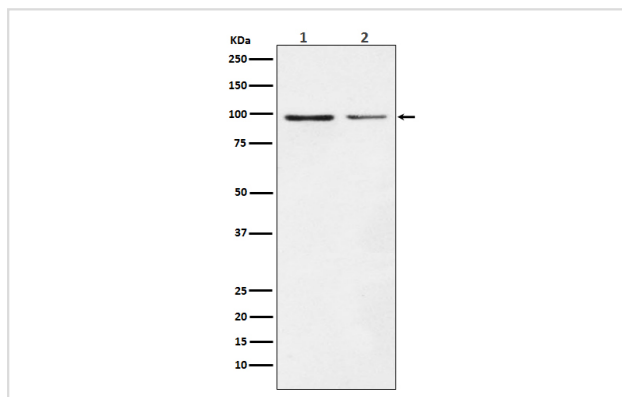
Application Details

WB: 1:500~1:2000

IHC: 1:50~1:200

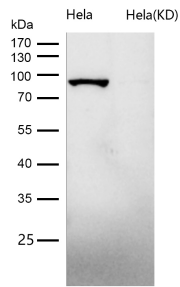
ICC/IF: 1:50~1:200

Images



Western blot analysis of Dynamin 1 expression in (1) SH-SY5Y cell lysate; (2) NIH/3T3 cell lysate.

All lanes use the Antibody at 1:1K dilution for 1 hour at room temperature.



Product Description

Microtubule-associated force-producing protein involved in producing microtubule bundles and able to bind and hydrolyze GTP. Most probably involved in vesicular trafficking processes. Involved in receptor-mediated endocytosis.

Note: This product is for in vitro research use only