

## HB9/HLXB9 Rabbit mAb

Catalog No: #56252

Package Size: #56252-1 50ul #56252-2 100ul

Orders: order@signalwayantibody.com

Support: tech@signalwayantibody.com

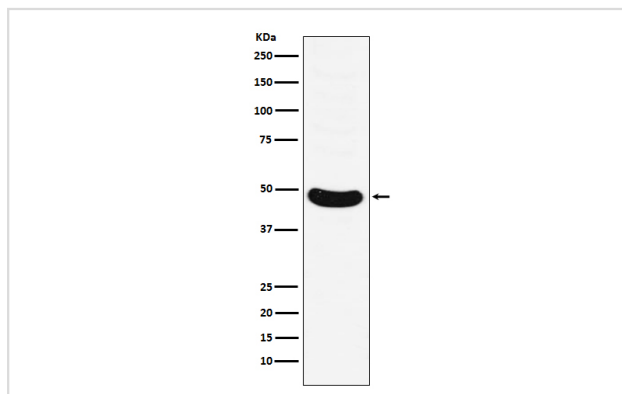
## Description

Product Name	HB9/HLXB9 Rabbit mAb
Host Species	Rabbit
Clonality	Monoclonal
Isotype	Rabbit IgG
Purification	Affinity-chromatography
Applications	WB IP
Species Reactivity	Human Mouse
Specificity	HB9/HLXB9 Antibody detects endogenous levels of total HB9/HLXB9
Immunogen Description	A synthesized peptide derived from human HB9/HLXB9
Other Names	HB9; HLXB9; Homeobox HB9; Homeobox protein HB9; HOXHB9; MNX1; Motor neuron and pancreas homeobox protein 1; SCRA1;
Accession No.	Uniprot:P50219
Uniprot	P50219
Calculated MW	41kDa
Formulation	Rabbit IgG in phosphate buffered saline , pH 7.4, 150mM NaCl, 0.02% sodium azide and 50% glycerol.
Storage	Store at +4 $\Lambda$ C short term. Store at -20 $\Lambda$ C long term. Avoid freeze / thaw cycle.

## Application Details

WB:1:500~1:2000IP:1:50

## Images



Western blot analysis of HB9/HLXB9 expression in Molt-4 cell lysate.

## Product Description

Putative transcription factor involved in pancreas development and function.

---

Note: This product is for in vitro research use only