

Clusterin Rabbit mAb

Catalog No: #56255

Package Size: #56255-1 50ul #56255-2 100ul

Orders: order@signalwayantibody.com

Support: tech@signalwayantibody.com

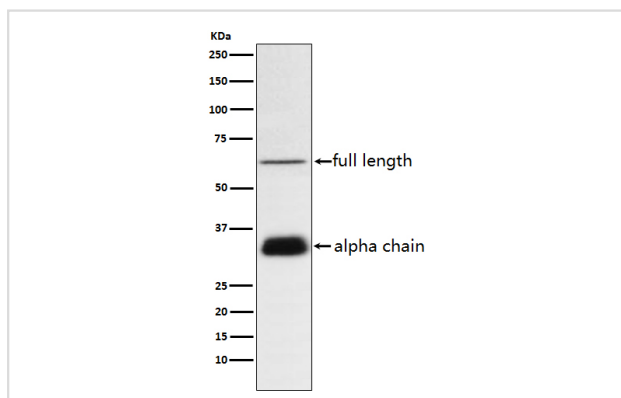
Description

Product Name	Clusterin Rabbit mAb
Host Species	Rabbit
Clonality	Monoclonal
Isotype	Rabbit IgG
Purification	Affinity-chromatography
Applications	WB IHC
Species Reactivity	Human Mouse
Specificity	Clusterin Antibody detects endogenous levels of total Clusterin
Immunogen Description	A synthesized peptide derived from human Clusterin
Other Names	CLI; AAG4; APOJ; CLU1; CLU2; KUB1; SGP2; APO-J; SGP-2; SP-40;TRPM2; TRPM-2; NA1/NA2;
Accession No.	Uniprot:P10909
Uniprot	P10909
Calculated MW	32-42, 65, 75kDa
Formulation	Rabbit IgG in phosphate buffered saline , pH 7.4, 150mM NaCl, 0.02% sodium azide and 50% glycerol.
Storage	Store at +4 Λ C short term. Store at -20 Λ C long term. Avoid freeze / thaw cycle.

Application Details

WB:1:500~1:2000IHC:1:50~1:200

Images



Western blot analysis of Clusterin expression in human plasma lysate.

Product Description

Clusterin (CLU, apolipoprotein J) is a multifunctional glycoprotein that is expressed ubiquitously in most tissues. Clusterin functions as a secreted chaperone protein that interacts with and stabilizes stress-induced proteins to prevent their precipitation. Research studies show that clusterin plays a protective role in Alzheimer's disease by sequestering amyloid β (1-40) peptides to form long-lived, stable complexes, which prevents amyloid fibril formation.

Note: This product is for in vitro research use only