

MUM1 Rabbit mAb

Catalog No: #56258

Package Size: #56258-1 50ul #56258-2 100ul

Orders: order@signalwayantibody.com

Support: tech@signalwayantibody.com

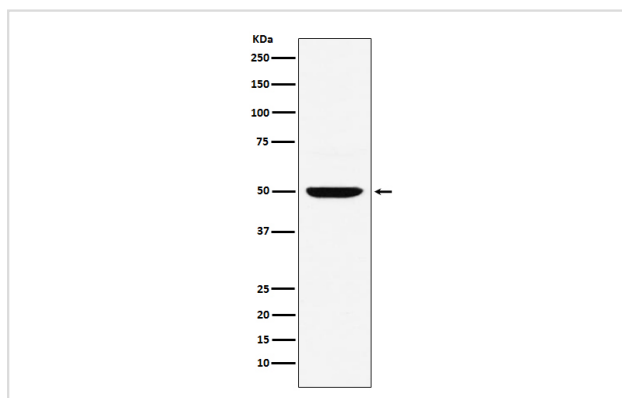
Description

Product Name	MUM1 Rabbit mAb
Host Species	Rabbit
Clonality	Monoclonal
Isotype	Rabbit IgG
Purification	Affinity-chromatography
Applications	WB IHC ICC/IF IP FC
Species Reactivity	Human
Specificity	MUM1 Antibody detects endogenous levels of total MUM1
Immunogen Description	A synthesized peptide derived from human MUM1
Other Names	LSIRF; Multiple myeloma oncogene 1; NF-EM5; IRF4; MUM1; Transcriptional activator PIP;
Accession No.	Uniprot:Q15306
Uniprot	Q15306
Calculated MW	52kDa
Formulation	Rabbit IgG in phosphate buffered saline , pH 7.4, 150mM NaCl, 0.02% sodium azide and 50% glycerol.
Storage	Store at +4Λ C short term. Store at -20Λ C long term. Avoid freeze / thaw cycle.

Application Details

WB:1:1000~1:5000IHC:1:50~1:200ICC/IF:1:50~1:200IP:1:100FC:1:120

Images



Western blot analysis of MUM1 expression in Daudi cell lysate.

Product Description

Melanoma associated antigen (mutated) 1 (MUM1, EXPAND1) is a PWWP-domain containing chromatin binding protein involved in maintaining chromatin architecture of interphase chromosomes.

Note: This product is for in vitro research use only