

Glycophorin A (CD235a) Rabbit mAb

Catalog No: #56259

Package Size: #56259-1 50ul #56259-2 100ul

Orders: order@signalwayantibody.com

Support: tech@signalwayantibody.com

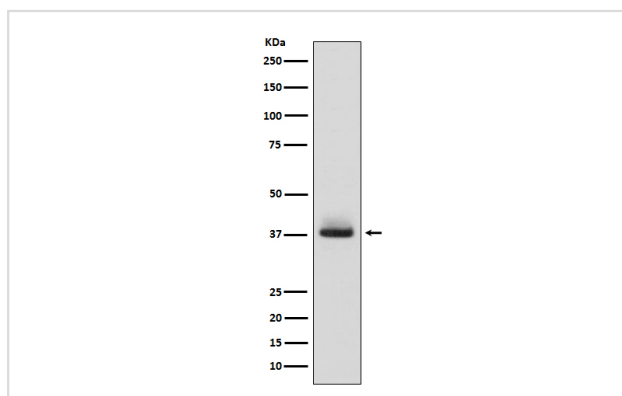
Description

Product Name	Glycophorin A (CD235a) Rabbit mAb
Host Species	Rabbit
Clonality	Monoclonal
Isotype	Rabbit IgG
Purification	Affinity-chromatography
Applications	WB IHC FC
Species Reactivity	Human
Specificity	Glycophorin A (CD235a) Antibody detects endogenous levels of total Glycophorin A (CD235a)
Immunogen Description	A synthesized peptide derived from human Glycophorin A (CD235a)
Other Names	CD235a; Glycophorin A; GPA; GP _E rik; Gp _M III; GYP _A ; HGp _M III; HGp _M IV; HGp _M IX; HGp _M XI; MN sialoglycoprotein; MNS; PAS2;
Accession No.	Uniprot:P02724
Uniprot	P02724
Calculated MW	38kDa
Formulation	Rabbit IgG in phosphate buffered saline , pH 7.4, 150mM NaCl, 0.02% sodium azide and 50% glycerol.
Storage	Store at +4 Λ C short term. Store at -20 Λ C long term. Avoid freeze / thaw cycle.

Application Details

WB:1:500~1:1000IHC:1:100~1:500FC:1:50

Images



Western blot analysis of Glycophorin A (CD235a) expression in human fetal liver lysate.

Product Description

Glycophorin A is the major intrinsic membrane protein of the erythrocyte. The N-terminal glycosylated segment, which lies outside the erythrocyte membrane, has MN blood group receptors. Appears to be important for the function of SLC4A1 and is required for high activity of SLC4A1.

Note: This product is for in vitro research use only