

## LSD2 / AOF1 Rabbit mAb

Catalog No: #56262

Package Size: #56262-1 50ul #56262-2 100ul

Orders: order@signalwayantibody.com

Support: tech@signalwayantibody.com

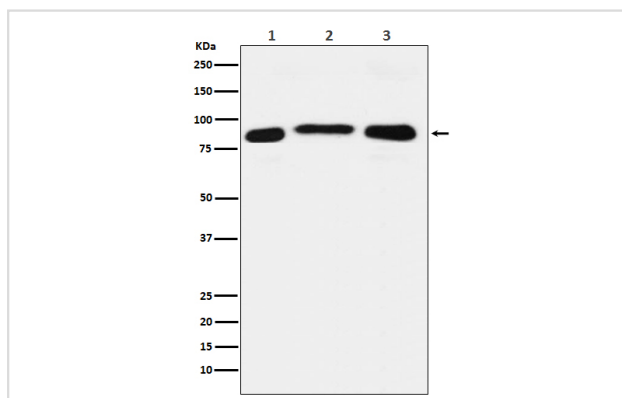
## Description

Product Name	LSD2 / AOF1 Rabbit mAb
Host Species	Rabbit
Clonality	Monoclonal
Isotype	Rabbit IgG
Purification	Affinity-chromatography
Applications	WB ICC/IF IP FC
Species Reactivity	Human Mouse Rat
Specificity	LSD2 / AOF1 Antibody detects endogenous levels of total LSD2 / AOF1
Immunogen Description	A synthesized peptide derived from human LSD2 / AOF1
Other Names	AOF1; KDM1B; LSD2; Lysine-specific histone demethylase 1B; Lysine-specific histone demethylase 2;
Accession No.	Uniprot:Q8NB78
Uniprot	Q8NB78
Calculated MW	92kDa
Formulation	Rabbit IgG in phosphate buffered saline , pH 7.4, 150mM NaCl, 0.02% sodium azide and 50% glycerol.
Storage	Store at +4 $\Lambda$ C short term. Store at -20 $\Lambda$ C long term. Avoid freeze / thaw cycle.

## Application Details

WB:1:500~1:2000ICC/IF:1:50~1:200IP:1:60FC:1:50

## Images



Western blot analysis of LSD2 / AOF1 expression in (1) HeLa cell lysate; (2) RAW264.7 cell lysate; (3) PC12 cell lysate.

## Product Description

Histone demethylase that demethylates 'Lys-4' of histone H3, a specific tag for epigenetic transcriptional activation, thereby acting as a corepressor. Required for de novo DNA methylation of a subset of imprinted genes during oogenesis. Acts by oxidizing the substrate by FAD to generate the corresponding imine that is subsequently hydrolyzed.

---

Note: This product is for in vitro research use only