

## PHF8 Rabbit mAb

Catalog No: #56265

Package Size: #56265-1 50ul #56265-2 100ul

Orders: order@signalwayantibody.com

Support: tech@signalwayantibody.com

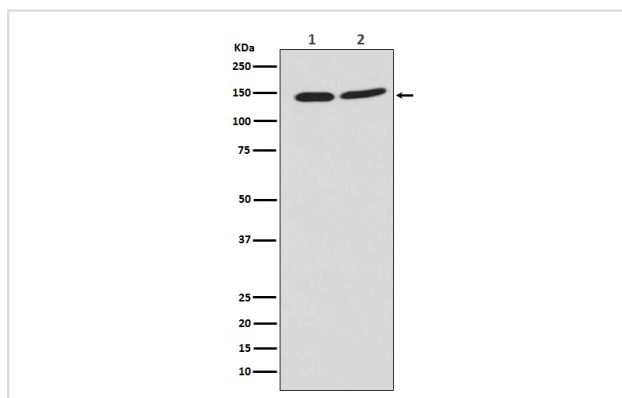
## Description

Product Name	PHF8 Rabbit mAb
Host Species	Rabbit
Clonality	Monoclonal
Isotype	Rabbit IgG
Purification	Affinity-chromatography
Applications	WB ICC/IF IP
Species Reactivity	Human Mouse Rat
Specificity	PHF8 Antibody detects endogenous levels of total PHF8
Immunogen Description	A synthesized peptide derived from human PHF8
Other Names	Histone lysine demethylase PHF8; MRXSSD; PHD finger protein 8; PHF8; ZNF422;
Accession No.	Uniprot:Q9UPP1
Uniprot	Q9UPP1
Calculated MW	140kDa
Formulation	Rabbit IgG in phosphate buffered saline , pH 7.4, 150mM NaCl, 0.02% sodium azide and 50% glycerol.
Storage	Store at +4Λ C short term. Store at -20Λ C long term. Avoid freeze / thaw cycle.

## Application Details

WB:1:500~1:2000ICC/IF:1:100~1:500IP:1:70

## Images



Western blot analysis of PHF8 expression in (1) Jurkat cell lysate; (2) NIH/3T3 cell lysate.

## Product Description

Involved in cell cycle progression by being required to control G1-S transition. Acts as a coactivator of rDNA transcription, by activating polymerase I (pol I) mediated transcription of rRNA genes.

---

Note: This product is for in vitro research use only