

Lck Rabbit mAb

Catalog No: #56270

Package Size: #56270-1 50ul #56270-2 100ul

Orders: order@signalwayantibody.com

Support: tech@signalwayantibody.com

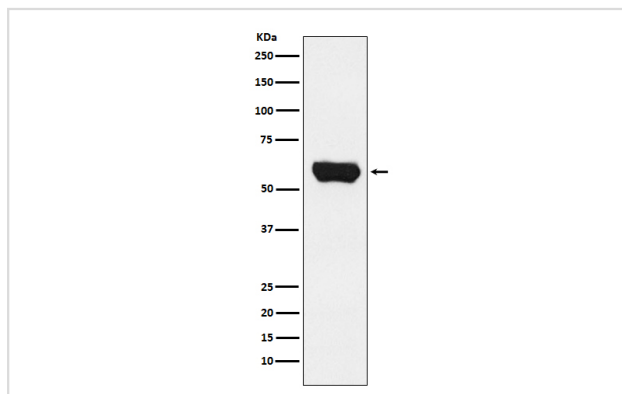
Description

Product Name	Lck Rabbit mAb
Host Species	Rabbit
Clonality	Monoclonal
Isotype	Rabbit IgG
Purification	Affinity-chromatography
Applications	WB IHC ICC IP FC
Species Reactivity	Human
Specificity	Lck Antibody detects endogenous levels of total Lck
Immunogen Description	A synthesized peptide derived from human Lck
Other Names	IMD22; LCK; Lck p56; LSK; Oncogene lck; P56 LCK; pp58 lck; Protein YT16; T cell specific protein tyrosine kinase; YT16;
Accession No.	Uniprot:P06239
Uniprot	P06239
Calculated MW	58kDa
Formulation	Rabbit IgG in phosphate buffered saline , pH 7.4, 150mM NaCl, 0.02% sodium azide and 50% glycerol.
Storage	Store at +4 Λ C short term. Store at -20 Λ C long term. Avoid freeze / thaw cycle.

Application Details

WB:1:500~1:1000IHC:1:50~1:200ICC/IF:1:50~1:200IP:1:80FC:1:20

Images



Western blot analysis of Lck expression in Jurkat cell lysate.

Product Description

The Src family of protein tyrosine kinases, which includes Src, Lyn, Fyn, Yes, Lck, Blk, and Hck, are important in the regulation of growth and differentiation of eukaryotic cells. Src activity is regulated by tyrosine phosphorylation at two sites, but with opposing effects.

Note: This product is for in vitro research use only