

## TRPM8 Rabbit mAb

Catalog No: #56273

Package Size: #56273-1 50ul #56273-2 100ul

Orders: order@signalwayantibody.com

Support: tech@signalwayantibody.com

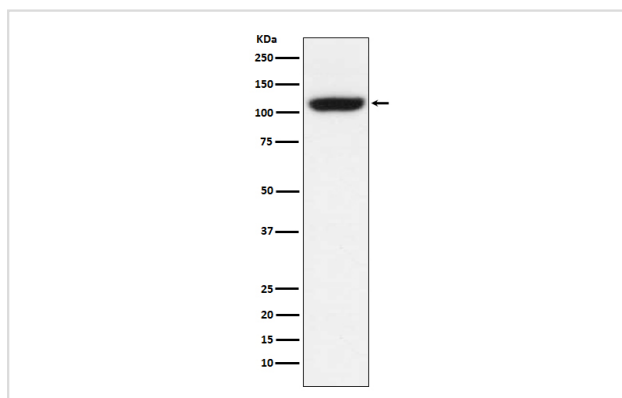
## Description

Product Name	TRPM8 Rabbit mAb
Host Species	Rabbit
Clonality	Monoclonal
Isotype	Rabbit IgG
Purification	Affinity-chromatography
Applications	WB ICC
Species Reactivity	Human Mouse
Specificity	TRPM8 Antibody detects endogenous levels of total TRPM8
Immunogen Description	A synthesized peptide derived from human TRPM8
Other Names	LTrpC6; MGC2849; Transient receptor potential p8; Trp p8; Trpm8; TRPP8;
Accession No.	Uniprot:Q7Z2W7
Uniprot	Q7Z2W7
Calculated MW	128kDa
Formulation	Rabbit IgG in phosphate buffered saline , pH 7.4, 150mM NaCl, 0.02% sodium azide and 50% glycerol.
Storage	Store at +4 $\Lambda$ C short term. Store at -20 $\Lambda$ C long term. Avoid freeze / thaw cycle.

## Application Details

WB:1:500~1:2000 ICC/IF:1:50~1:200

## Images



Western blot analysis of TRPM8 expression in A549 cell lysate.

## Product Description

Activated by icilin, eucalyptol, menthol, cold and modulation of intracellular pH. Involved in menthol sensation. Permeable for monovalent cations sodium, potassium, and cesium and divalent cation calcium.

---

Note: This product is for in vitro research use only