

CTLA4 (CD152) Rabbit mAb

Catalog No: #56275

Package Size: #56275-1 50ul #56275-2 100ul

Orders: order@signalwayantibody.com

Support: tech@signalwayantibody.com

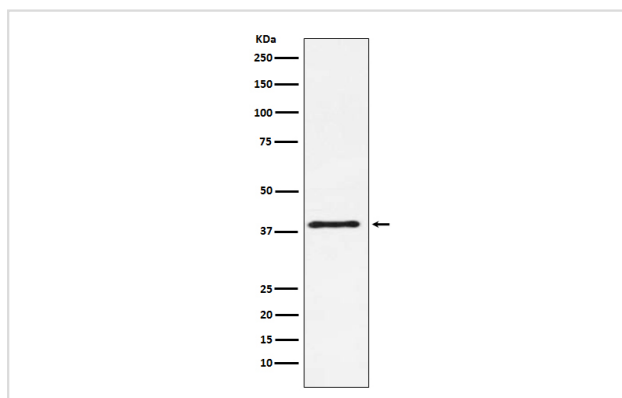
Description

Product Name	CTLA4 (CD152) Rabbit mAb
Host Species	Rabbit
Clonality	Monoclonal
Isotype	Rabbit IgG
Purification	Affinity-chromatography
Applications	WB ICC/IF
Species Reactivity	Human Mouse Rat
Specificity	CTLA4 (CD152) Antibody detects endogenous levels of total CTLA4 (CD152)
Immunogen Description	A synthesized peptide derived from human CTLA4 (CD152)
Other Names	CTLA4;CD;CD152;CELIAC3;CTLA-4;GRD4;GSE;ICOS;IDDM12;
Accession No.	Uniprot:P16410
Uniprot	P16410
Calculated MW	43kDa
Formulation	Rabbit IgG in phosphate buffered saline , pH 7.4, 150mM NaCl, 0.02% sodium azide and 50% glycerol.
Storage	Store at +4 Λ C short term. Store at -20 Λ C long term. Avoid freeze / thaw cycle.

Application Details

WB: 1:500~1:2000 ICC/IF: 1:50~1:200

Images



Western blot analysis of CTLA4 (CD152) expression in NIH/3T3 cell lysate.

Product Description

Inhibitory receptor acting as a major negative regulator of T-cell responses. The affinity of CTLA4 for its natural B7 family ligands, CD80 and CD86, is considerably stronger than the affinity of their cognate stimulatory coreceptor CD28.

Note: This product is for in vitro research use only