

## TRIM25 Rabbit mAb

Catalog No: #56292

Package Size: #56292-1 50ul #56292-2 100ul

Orders: order@signalwayantibody.com

Support: tech@signalwayantibody.com

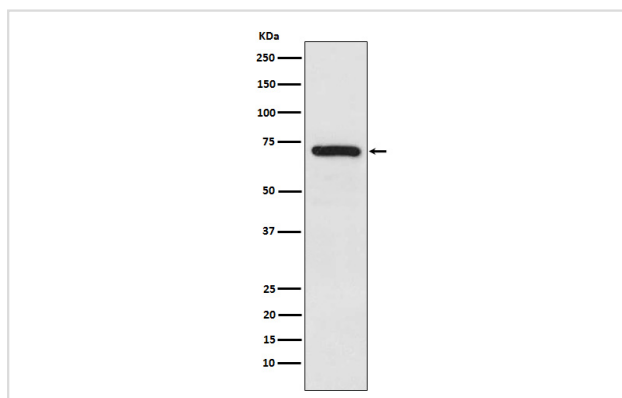
## Description

|                       |  |
|-----------------------|--|
| Product Name          | TRIM25 Rabbit mAb  |
| Host Species          | Rabbit   |
| Clonality             | Monoclonal   |
| Isotype               | Rabbit IgG   |
| Purification          | Affinity-chromatography  |
| Applications          | WB IHC ICC/IF IP FC  |
| Species Reactivity    | Human Mouse Rat  |
| Specificity           | TRIM25 Antibody detects endogenous levels of total TRIM25  |
| Immunogen Description | A synthesized peptide derived from human TRIM25  |
| Other Names           | EFP; RNF147; TRI25; TRIM 25; Trim25; Z147; ZNF147;   |
| Accession No.         | Uniprot:Q14258   |
| Uniprot               | Q14258   |
| Calculated MW         | 71kDa  |
| Formulation           | Rabbit IgG in phosphate buffered saline , pH 7.4, 150mM NaCl, 0.02% sodium azide and 50% glycerol. |
| Storage               | Store at +4 $\Lambda$ C short term. Store at -20 $\Lambda$ C long term. Avoid freeze / thaw cycle. |

## Application Details

WB:1:1000~1:5000IHC:1:50~1:200ICC/IF:1:100~1:500IP:1:50FC:1:60

## Images



Western blot analysis of TRIM25 expression in HeLa cell lysate.

## Product Description

Functions as an ubiquitin E3 ligase and as an ISG15 E3 ligase. Involved in innate immune defense against viruses by mediating ubiquitination of DDX58. Mediates 'Lys-63'-linked polyubiquitination of the DDX58 N-terminal CARD-like region which is crucial for triggering the cytosolic signal transduction that leads to the production of interferons in response to viral infection.

---

Note: This product is for in vitro research use only