

GRB2 Rabbit mAb

Catalog No: #56294

Package Size: #56294-1 50ul #56294-2 100ul

Orders: order@signalwayantibody.com

Support: tech@signalwayantibody.com

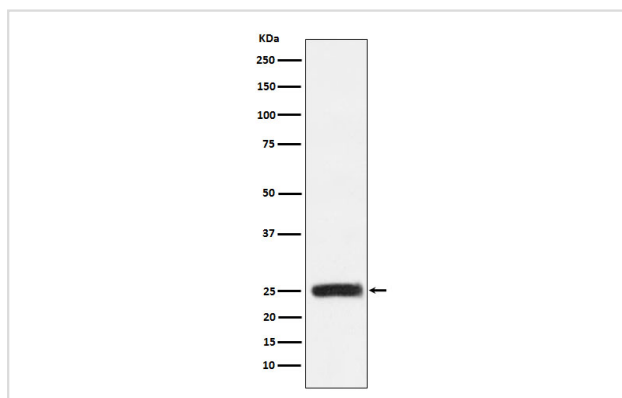
Description

| | |
|-----------------------|--|
| Product Name | GRB2 Rabbit mAb |
| Host Species | Rabbit |
| Clonality | Monoclonal |
| Isotype | Rabbit IgG |
| Purification | Affinity-chromatography |
| Applications | WB IHC ICC/IF IP |
| Species Reactivity | Human Mouse Rat |
| Specificity | GRB2 Antibody detects endogenous levels of total GRB2 |
| Immunogen Description | A synthesized peptide derived from human GRB2 |
| Other Names | ASH; Grb2; Grb3 3; HT027; NCKAP2; Protein ash; SEM5; |
| Accession No. | Uniprot:P62993 |
| Uniprot | P62993 |
| Calculated MW | 25kDa |
| Formulation | Rabbit IgG in phosphate buffered saline , pH 7.4, 150mM NaCl, 0.02% sodium azide and 50% glycerol. |
| Storage | Store at +4Λ C short term. Store at -20Λ C long term. Avoid freeze / thaw cycle. |

Application Details

WB:1:500~1:2000IHC:1:50~1:200ICC/IF:1:50~1:200IP:1:50

Images



Western blot analysis of GRB2 expression in HEK293 cell lysate.

Product Description

Adapter protein that provides a critical link between cell surface growth factor receptors and the Ras signaling pathway.

Note: This product is for in vitro research use only