

CD166 Rabbit mAb

Catalog No: #56295

Package Size: #56295-1 50ul #56295-2 100ul

Orders: order@signalwayantibody.com

Support: tech@signalwayantibody.com

Description

Product Name	CD166 Rabbit mAb
Host Species	Rabbit
Clonality	Monoclonal
Isotype	Rabbit IgG
Purification	Affinity-chromatography
Applications	WB IHC ICC/IF IP FC
Species Reactivity	Human Mouse Rat
Specificity	CD166 Antibody detects endogenous levels of total CD166
Immunogen Description	A synthesized peptide derived from human CD166
Other Names	ALCAM; CD166; MEMD;
Accession No.	Uniprot:Q13740
Uniprot	Q13740
Calculated MW	100kDa
Formulation	Rabbit IgG in phosphate buffered saline , pH 7.4, 150mM NaCl, 0.02% sodium azide and 50% glycerol.
Storage	Store at +4Λ C short term. Store at -20Λ C long term. Avoid freeze / thaw cycle.

Application Details

WB:1:1000~1:5000

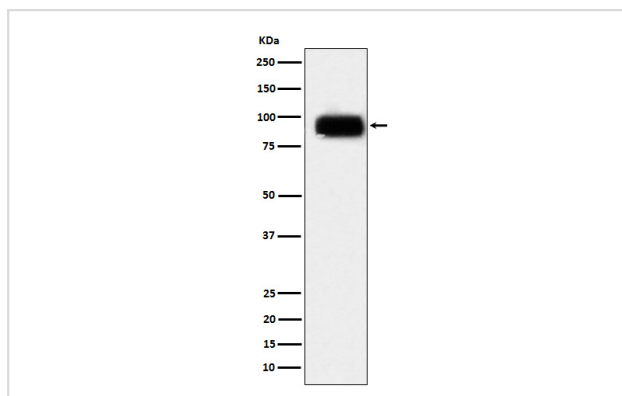
IHC:1:50~1:200

ICC/IF:1:50~1:200

IP:1:40

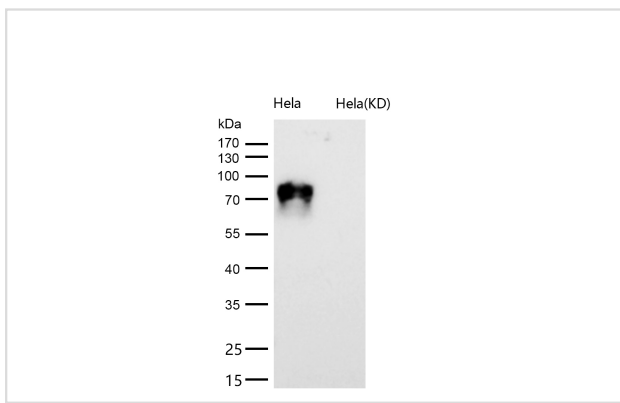
FC:1:60

Images



Western blot analysis of CD166 expression in Daudi cell lysate.

All lanes use the Antibody at 1:2K dilution for 1 hour at room temperature.



Product Description

Cell adhesion molecule that binds to CD6. Involved in neurite extension by neurons via heterophilic and homophilic interactions. May play a role in the binding of T- and B-cells to activated leukocytes, as well as in interactions between cells of the nervous system.

Note: This product is for in vitro research use only