

## CD23 Rabbit mAb

Catalog No: #56300

Package Size: #56300-1 50ul #56300-2 100ul

Orders: order@signalwayantibody.com

Support: tech@signalwayantibody.com

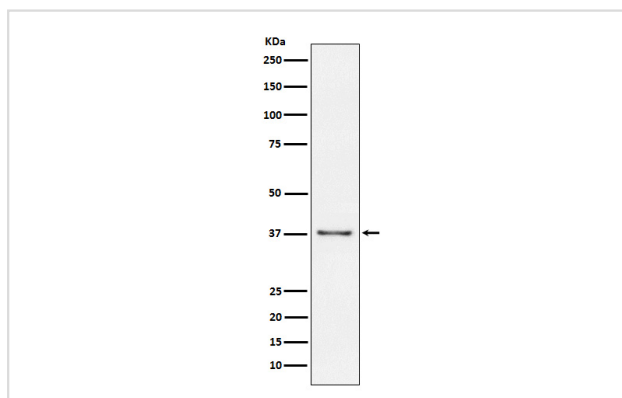
## Description

Product Name	CD23 Rabbit mAb
Host Species	Rabbit
Clonality	Monoclonal
Isotype	Rabbit IgG
Purification	Affinity-chromatography
Applications	WB IHC FC
Species Reactivity	Human
Specificity	CD23 Antibody detects endogenous levels of total CD23
Immunogen Description	A synthesized peptide derived from human CD23
Other Names	CD23; FCE2; CD23A; IGEBF; CLEC4J; FCER2;
Accession No.	Uniprot:P06734
Uniprot	P06734
Calculated MW	36kDa
Formulation	Rabbit IgG in phosphate buffered saline , pH 7.4, 150mM NaCl, 0.02% sodium azide and 50% glycerol.
Storage	Store at +4Λ C short term. Store at -20Λ C long term. Avoid freeze / thaw cycle.

## Application Details

WB:1:500~1:1000IHC:1:50~1:200FC:1:30

## Images



Western blot analysis of CD23 expression in Raji cell lysate.

## Product Description

This receptor has essential roles in the regulation of IgE production and in the differentiation of B-cells (it is a B-cell-specific antigen).

---

Note: This product is for in vitro research use only