

LYRIC Rabbit mAb

Catalog No: #56301

Package Size: #56301-1 50ul #56301-2 100ul

Orders: order@signalwayantibody.com

Support: tech@signalwayantibody.com

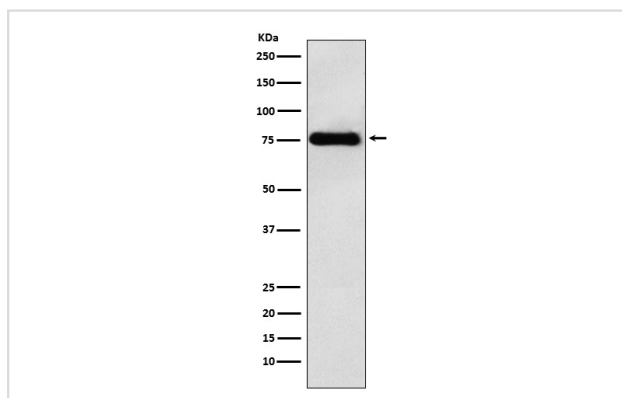
Description

Product Name	LYRIC Rabbit mAb
Host Species	Rabbit
Clonality	Monoclonal
Isotype	Rabbit IgG
Purification	Affinity-chromatography
Applications	WB IHC ICC/IF
Species Reactivity	Human Mouse Rat
Specificity	LYRIC Antibody detects endogenous levels of total LYRIC
Immunogen Description	A synthesized peptide derived from human LYRIC
Other Names	3D3; 3D3/LYRIC; AEG1; Astrocyte elevated gene 1; LYRIC; LYRIC/3D3; Metadherin; MTDH; Protein LYRIC;
Accession No.	Uniprot:Q86UE4
Uniprot	Q86UE4
Calculated MW	75kDa
Formulation	Rabbit IgG in phosphate buffered saline , pH 7.4, 150mM NaCl, 0.02% sodium azide and 50% glycerol.
Storage	Store at +4 Λ C short term. Store at -20 Λ C long term. Avoid freeze / thaw cycle.

Application Details

WB:1:1000~1:5000IHC:1:50~1:200ICC/IF:1:50~1:200

Images



Western blot analysis of LYRIC expression in HeLa cell lysate.

Product Description

Downregulates SLC1A2/EAAT2 promoter activity when expressed ectopically. Activates the nuclear factor kappa-B (NF-kappa-B) transcription factor. Promotes anchorage-independent growth of immortalized melanocytes and astrocytes which is a key component in tumor cell expansion.

Note: This product is for in vitro research use only