

## CD30 Rabbit mAb

Catalog No: #56302

Package Size: #56302-1 50ul #56302-2 100ul

Orders: order@signalwayantibody.com

Support: tech@signalwayantibody.com

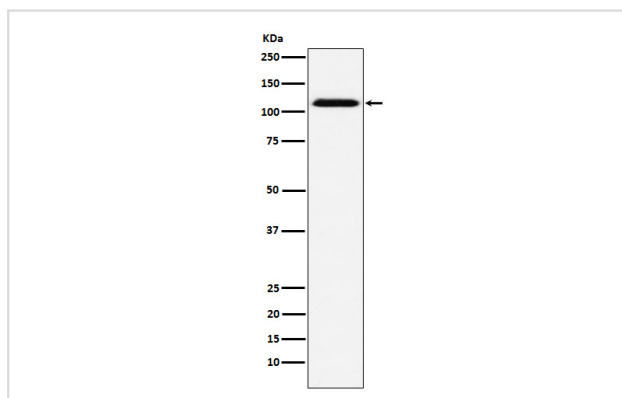
## Description

Product Name	CD30 Rabbit mAb
Host Species	Rabbit
Clonality	Monoclonal
Isotype	Rabbit IgG
Purification	Affinity-chromatography
Applications	WB IHC
Species Reactivity	Human
Specificity	CD30 Antibody detects endogenous levels of total CD30
Immunogen Description	A synthesized peptide derived from human CD30
Other Names	CD30; D1S166E; K11; Tnfrsf8;
Accession No.	Uniprot:P28908
Uniprot	P28908
Calculated MW	120kDa
Formulation	Rabbit IgG in phosphate buffered saline , pH 7.4, 150mM NaCl, 0.02% sodium azide and 50% glycerol.
Storage	Store at +4 $\Lambda$ C short term. Store at -20 $\Lambda$ C long term. Avoid freeze / thaw cycle.

## Application Details

WB:1:500~1:2000IHC:1:100~1:500

## Images



Western blot analysis of CD30 expression in A431 cell lysate.

## Product Description

Receptor for TNFSF8/CD30L. May play a role in the regulation of cellular growth and transformation of activated lymphoblasts. Regulates gene expression through activation of NF-kappa-B.

---

Note: This product is for in vitro research use only