

## KSR1 Rabbit mAb

Catalog No: #56305

Package Size: #56305-1 50ul #56305-2 100ul

Orders: order@signalwayantibody.com

Support: tech@signalwayantibody.com

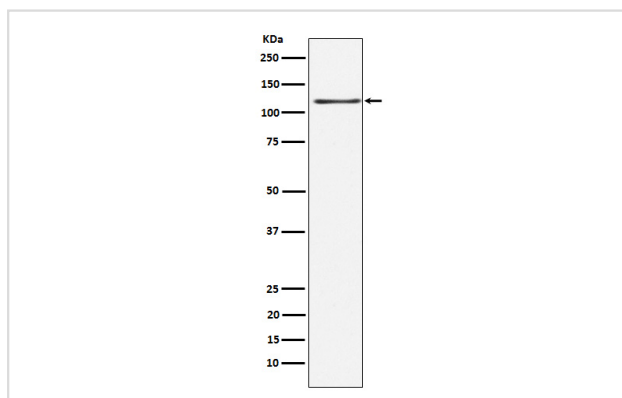
## Description

Product Name	KSR1 Rabbit mAb
Host Species	Rabbit
Clonality	Monoclonal
Isotype	Rabbit IgG
Purification	Affinity-chromatography
Applications	WB IHC ICC/IF FC
Species Reactivity	Human Mouse
Specificity	KSR1 Antibody detects endogenous levels of total KSR1
Immunogen Description	A synthesized peptide derived from human KSR1
Other Names	BKSR1; dKsr; EK31; KSR; KSR1; RSU2; SR31;
Accession No.	Uniprot:Q81VT5
Uniprot	Q81VT5
Calculated MW	120kDa
Formulation	Rabbit IgG in phosphate buffered saline , pH 7.4, 150mM NaCl, 0.02% sodium azide and 50% glycerol.
Storage	Store at +4 $\Lambda$ C short term. Store at -20 $\Lambda$ C long term. Avoid freeze / thaw cycle.

## Application Details

WB:1:500~1:2000IHC:1:50~1:200ICC/IF:1:50~1:200FC:1:100

## Images



Western blot analysis of KSR1 expression in HEK293 cell lysate.

## Product Description

Location-regulated scaffolding protein connecting MEK to RAF. Promotes MEK and RAF phosphorylation and activity through assembly of an activated signaling complex. By itself, it has no demonstrated kinase activity.

---

Note: This product is for in vitro research use only