

## BAG2 Rabbit mAb

Catalog No: #56306

Package Size: #56306-1 50ul #56306-2 100ul

Orders: order@signalwayantibody.com

Support: tech@signalwayantibody.com

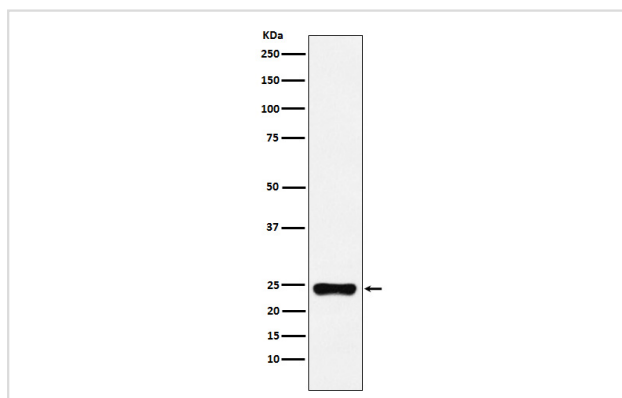
## Description

|                       |  |
|-----------------------|--|
| Product Name          | BAG2 Rabbit mAb  |
| Host Species          | Rabbit   |
| Clonality             | Monoclonal   |
| Isotype               | Rabbit IgG   |
| Purification          | Affinity-chromatography  |
| Applications          | WB ICC/IF  |
| Species Reactivity    | Human Mouse Rat  |
| Specificity           | BAG2 Antibody detects endogenous levels of total BAG2  |
| Immunogen Description | A synthesized peptide derived from human BAG2  |
| Other Names           | BAG 2; Bag2;   |
| Accession No.         | Uniprot:O95816   |
| Uniprot               | O95816   |
| Calculated MW         | 24kDa  |
| Formulation           | Rabbit IgG in phosphate buffered saline , pH 7.4, 150mM NaCl, 0.02% sodium azide and 50% glycerol. |
| Storage               | Store at +4 $\Lambda$ C short term. Store at -20 $\Lambda$ C long term. Avoid freeze / thaw cycle. |

## Application Details

WB: 1:500~1:2000 ICC/IF: 1:50~1:200

## Images



Western blot analysis of BAG2 expression in HeLa cell lysate.

## Product Description

Inhibits the chaperone activity of HSP70/HSC70 by promoting substrate release.

---

Note: This product is for in vitro research use only