

HA-tag Rabbit mAb

Catalog No: #56311

Package Size: #56311-1 50ul #56311-2 100ul

Orders: order@signalwayantibody.com

Support: tech@signalwayantibody.com

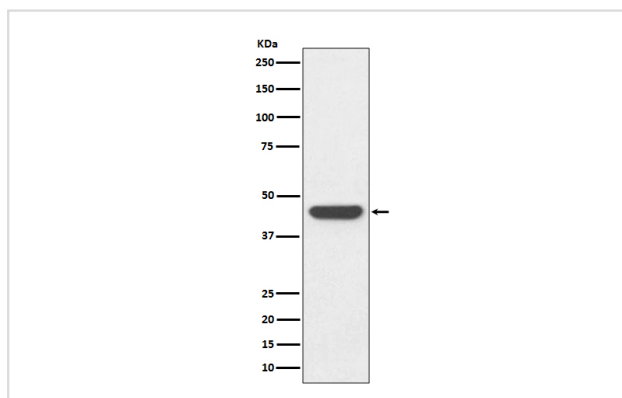
Description

Product Name	HA-tag Rabbit mAb
Host Species	Rabbit
Clonality	Monoclonal
Isotype	Rabbit IgG
Purification	Affinity-chromatography
Applications	WB
Species Reactivity	All
Specificity	HA-tag Antibody detects endogenous levels of C-terminal, internal, and N-terminal HA-tagged proteins.
Immunogen Description	A synthesized peptide
Other Names	N/A
Accession No.	Uniprot:N/A
Uniprot	N/A
Calculated MW	N/A
Formulation	Rabbit IgG in phosphate buffered saline , pH 7.4, 150mM NaCl, 0.02% sodium azide and 50% glycerol.
Storage	Store at +4Λ C short term. Store at -20Λ C long term. Avoid freeze / thaw cycle.

Application Details

WB:1:3000~1:10000

Images



Western blot analysis of HA-tag fusion protein, using HA tag Antibody

Product Description

HA-Tag antibody is part of the Tag series of antibodies, the best quality in the research.

Note: This product is for in vitro research use only