

## GFP Rabbit mAb

Catalog No: #56314

Package Size: #56314-1 50ul #56314-2 100ul

Orders: [order@signalwayantibody.com](mailto:order@signalwayantibody.com)Support: [tech@signalwayantibody.com](mailto:tech@signalwayantibody.com)

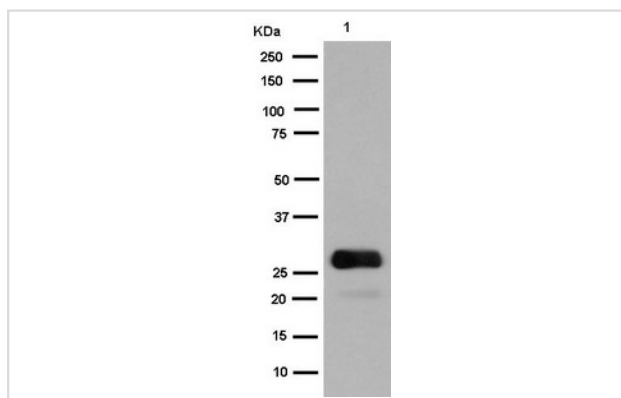
## Description

Product Name	GFP Rabbit mAb
Host Species	Rabbit
Clonality	Monoclonal
Isotype	Rabbit IgG
Purification	Affinity-chromatography
Applications	WB IHC ICC/IF
Species Reactivity	All
Specificity	GFP antibody detects endogenous levels of C-terminal, internal, and N-terminal GFP-tagged proteins.
Immunogen Description	A synthesized peptide derived from green fluorescent protein
Other Names	GFP ; yfp ; Green fluorescent protein ;
Accession No.	Uniprot:Q963I9
Uniprot	Q963I9
Calculated MW	27kDa
Formulation	Rabbit IgG in phosphate buffered saline , pH 7.4, 150mM NaCl, 0.02% sodium azide and 50% glycerol.
Storage	Store at +4 $\Lambda$ C short term. Store at -20 $\Lambda$ C long term. Avoid freeze / thaw cycle.

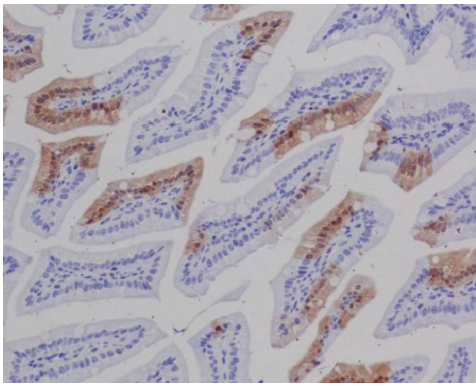
## Application Details

WB:1:5000~1:10000IHC:1:100~1:500ICC/IF:1:100~1:500

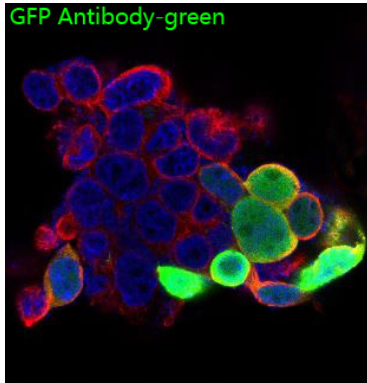
## Images



Western blot analysis of GFP expression in 293 cell lysate transfected with GFP.



Immunohistochemical analysis of paraffin-embedded GFP transgenic human colon, using GFP Antibody.



Immunofluorescent analysis of 293 cells, using GFP Antibody

## Product Description

Green fluorescent protein(GFP) has been engineered to produce a vast number of variously colored mutants, fusion proteins, and biosensors. Fluorescent proteins and its mutated allelic forms, blue, cyan and yellow have become a useful and ubiquitous tool for making chimeric proteins, where they function as a fluorescent protein tag. Typically they tolerate N- and C-terminal fusion to a broad variety of proteins.

Note: This product is for in vitro research use only