

GFP Rabbit mAb

Catalog No: #56315

Package Size: #56315-1 50ul #56315-2 100ul

Orders: order@signalwayantibody.com

Support: tech@signalwayantibody.com

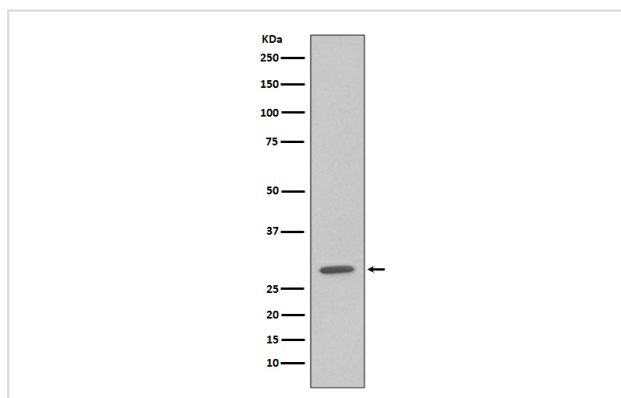
Description

| | |
|-----------------------|---|
| Product Name | GFP Rabbit mAb |
| Host Species | Rabbit |
| Clonality | Monoclonal |
| Isotype | Rabbit IgG |
| Purification | Affinity-chromatography |
| Applications | WB |
| Species Reactivity | All |
| Specificity | GFP antibody detects endogenous levels of C-terminal, internal, and N-terminal GFP-tagged proteins. |
| Immunogen Description | A synthesized peptide derived from green fluorescent protein |
| Other Names | GFP ; yfp ; Green fluorescent protein ; |
| Accession No. | Uniprot:P42212 |
| Uniprot | P42212 |
| Calculated MW | 27kDa |
| Formulation | Rabbit IgG in phosphate buffered saline , pH 7.4, 150mM NaCl, 0.02% sodium azide and 50% glycerol. |
| Storage | Store at +4 Λ C short term. Store at -20 Λ C long term. Avoid freeze / thaw cycle. |

Application Details

WB:1:3000~1:10000

Images



Western blot analysis of GFP expression in 293 cell lysate transfected with GFP.

Product Description

Green fluorescent protein(GFP) has been engineered to produce a vast number of variously colored mutants, fusion proteins, and biosensors. Fluorescent proteins and its mutated allelic forms, blue, cyan and yellow have become a useful and ubiquitous tool for making chimeric proteins, where they function as a fluorescent protein tag. Typically they tolerate N- and C-terminal fusion to a broad variety of proteins.

Note: This product is for in vitro research use only