

## GST Rabbit mAb

Catalog No: #56319

Package Size: #56319-1 50ul #56319-2 100ul

Orders: order@signalwayantibody.com

Support: tech@signalwayantibody.com

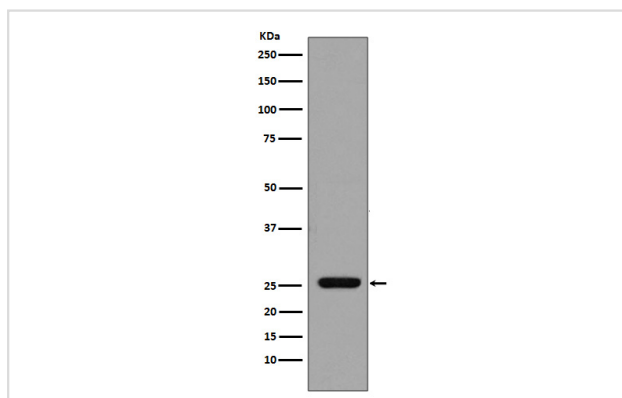
## Description

Product Name	GST Rabbit mAb
Host Species	Rabbit
Clonality	Monoclonal
Isotype	Rabbit IgG
Purification	Affinity-chromatography
Applications	WB ICC IP
Species Reactivity	All
Specificity	GST Antibody detects endogenous levels of C-terminal, internal, and N-terminal GST-tagged proteins.
Immunogen Description	A synthesized peptide derived from GST
Other Names	N/A
Accession No.	Uniprot:N/A
Uniprot	N/A
Calculated MW	26kDa
Formulation	Rabbit IgG in phosphate buffered saline , pH 7.4, 150mM NaCl, 0.02% sodium azide and 50% glycerol.
Storage	Store at +4 $\Lambda$ C short term. Store at -20 $\Lambda$ C long term. Avoid freeze / thaw cycle.

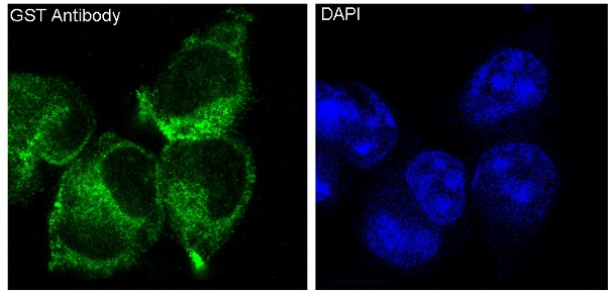
## Application Details

WB:1:1000~1:5000ICC1:50~1:200IP:1:50

## Images



Western blot analysis of GST expression in GST recombinant protein.



Immunofluorescent analysis of 293 cells, using GST Antibody

## Product Description

---

GST-Tag antibody is part of the Tag series of antibodies, the best quality in the research.

---

Note: This product is for in vitro research use only