

Heparanase 1 Rabbit mAb

Catalog No: #56324

Package Size: #56324-1 50ul #56324-2 100ul

Orders: order@signalwayantibody.com

Support: tech@signalwayantibody.com

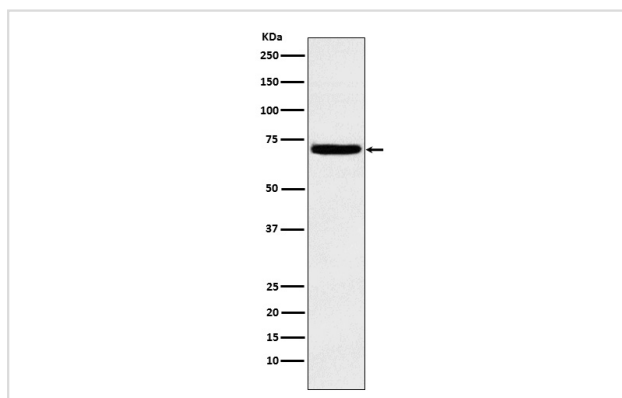
Description

| | |
|-----------------------|--|
| Product Name | Heparanase 1 Rabbit mAb |
| Host Species | Rabbit |
| Clonality | Monoclonal |
| Isotype | Rabbit IgG |
| Purification | Affinity-chromatography |
| Applications | WB IP |
| Species Reactivity | Human Mouse Rat |
| Specificity | Heparanase 1 Antibody detects endogenous levels of total Heparanase 1 |
| Immunogen Description | A synthesized peptide derived from human Heparanase 1 |
| Other Names | HEP; Heparanase; Heparanase1; Hpa 1; HPA; Hpa1 HPR1; HPSE1; HSE1; |
| Accession No. | Uniprot:Q9Y251 |
| Uniprot | Q9Y251 |
| Calculated MW | 70kDa |
| Formulation | Rabbit IgG in phosphate buffered saline , pH 7.4, 150mM NaCl, 0.02% sodium azide and 50% glycerol. |
| Storage | Store at +4Λ C short term. Store at -20Λ C long term. Avoid freeze / thaw cycle. |

Application Details

WB:1:500~1:2000IP:1:50

Images



Western blot analysis of Heparanase 1 expression in K562 cell lysate.

Product Description

Endoglycosidase which is a cell surface and extracellular matrix-degrading enzyme. Cleaves heparan sulfate proteoglycans (HSPGs) into heparan sulfate side chains and core proteoglycans.

Note: This product is for in vitro research use only