

## SLC9A1 Rabbit mAb

Catalog No: #56325

Package Size: #56325-1 50ul #56325-2 100ul

Orders: order@signalwayantibody.com

Support: tech@signalwayantibody.com

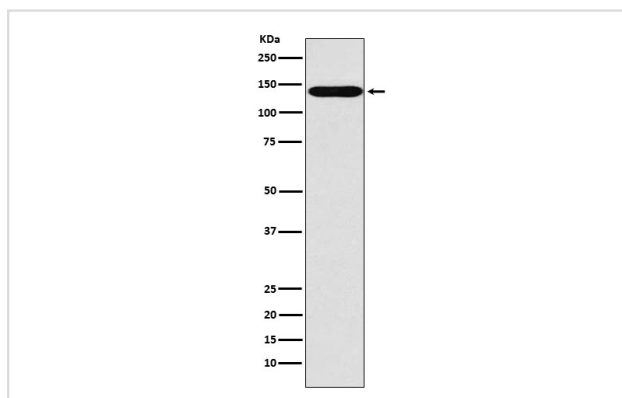
## Description

Product Name	SLC9A1 Rabbit mAb
Host Species	Rabbit
Clonality	Monoclonal
Isotype	Rabbit IgG
Purification	Affinity-chromatography
Applications	WB
Species Reactivity	Human
Specificity	Sodium / Hydrogen Exchanger 1 Antibody detects endogenous levels of total Sodium / Hydrogen Exchanger 1
Immunogen Description	A synthesized peptide derived from human Sodium / Hydrogen Exchanger 1
Other Names	APNH; APNH1; NHE1; SLC9A1;
Accession No.	Uniprot:P19634
Uniprot	P19634
Calculated MW	130kDa
Formulation	Rabbit IgG in phosphate buffered saline , pH 7.4, 150mM NaCl, 0.02% sodium azide and 50% glycerol.
Storage	Store at +4 $\Lambda$ C short term. Store at -20 $\Lambda$ C long term. Avoid freeze / thaw cycle.

## Application Details

WB: 1:500~1:2000

## Images



Western blot analysis of Sodium / Hydrogen Exchanger 1 expression in MOLT4 cell lysate.

## Product Description

Involved in pH regulation to eliminate acids generated by active metabolism or to counter adverse environmental conditions. Major proton extruding system driven by the inward sodium ion chemical gradient. Plays an important role in signal transduction.

---

Note: This product is for in vitro research use only