

## NuMA Rabbit mAb

Catalog No: #56334

Package Size: #56334-1 50ul #56334-2 100ul

Orders: order@signalwayantibody.com

Support: tech@signalwayantibody.com

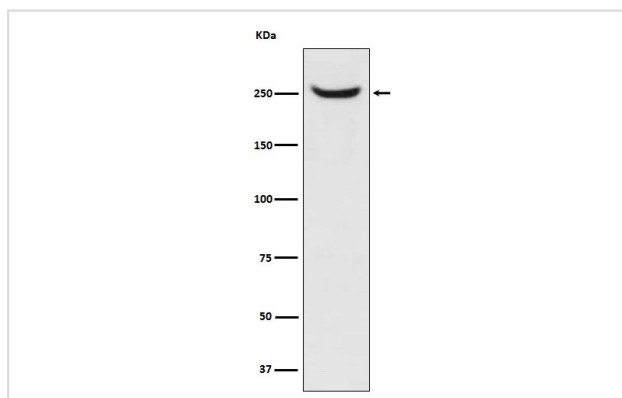
## Description

Product Name	NuMA Rabbit mAb
Host Species	Rabbit
Clonality	Monoclonal
Isotype	Rabbit IgG
Purification	Affinity-chromatography
Applications	WB IHC ICC/IF
Species Reactivity	Human Mouse Rat
Specificity	NuMA Antibody detects endogenous levels of total NuMA
Immunogen Description	A synthesized peptide derived from human NuMA
Other Names	NMP 22; NUMA; NUMA1; SP H antigen;
Accession No.	Uniprot:Q14980
Uniprot	Q14980
Calculated MW	238kDa
Formulation	Rabbit IgG in phosphate buffered saline , pH 7.4, 150mM NaCl, 0.02% sodium azide and 50% glycerol.
Storage	Store at +4Λ C short term. Store at -20Λ C long term. Avoid freeze / thaw cycle.

## Application Details

WB:1:500~1:2000IHC:1:50~1:200ICC/IF:1:50~1:200

## Images



Western blot analysis of Mad2L1 expression in HeLa cell lysate.

## Product Description

May be a structural component of the nucleus.

---

Note: This product is for in vitro research use only