

IGFBP7 Rabbit mAb

Catalog No: #56335

Package Size: #56335-1 50ul #56335-2 100ul

Orders: order@signalwayantibody.com

Support: tech@signalwayantibody.com

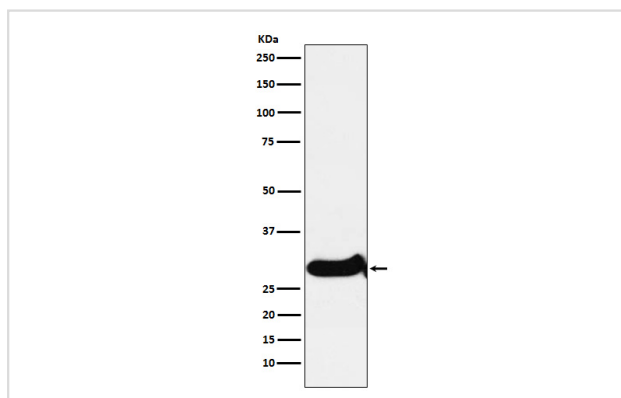
Description

Product Name	IGFBP7 Rabbit mAb
Host Species	Rabbit
Clonality	Monoclonal
Isotype	Rabbit IgG
Purification	Affinity-chromatography
Applications	WB IHC ICC/IF FC
Species Reactivity	Human Mouse Rat
Specificity	IGFBP7 Antibody detects endogenous levels of total IGFBP7
Immunogen Description	A synthesized peptide derived from human IGFBP7
Other Names	AGM; PSF; TAF; FSTL2; IBP-7; MAC25; IGFBP-7; RAMSVPS; IGFBP-7v; IGFBPRP1;
Accession No.	Uniprot:Q16270
Uniprot	Q16270
Calculated MW	29kDa
Formulation	Rabbit IgG in phosphate buffered saline , pH 7.4, 150mM NaCl, 0.02% sodium azide and 50% glycerol.
Storage	Store at +4 Λ C short term. Store at -20 Λ C long term. Avoid freeze / thaw cycle.

Application Details

WB:1:500~1:2000IHC:1:50~1:200ICC/IF:1:50~1:200FC:1:200

Images



Western blot analysis of IGFBP7 expression in SW480 cell lysate.

Product Description

Binds IGF-I and IGF-II with a relatively low affinity. Stimulates prostacyclin (PGI₂) production. Stimulates cell adhesion.

Note: This product is for in vitro research use only