

## Claudin 11 Rabbit mAb

Catalog No: #56339

Package Size: #56339-1 50ul #56339-2 100ul

Orders: order@signalwayantibody.com

Support: tech@signalwayantibody.com

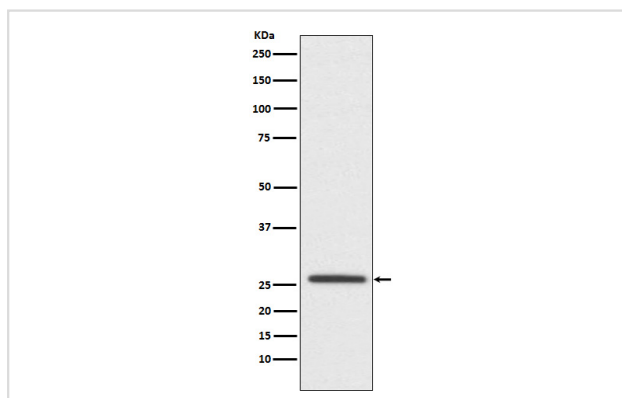
## Description

Product Name	Claudin 11 Rabbit mAb
Host Species	Rabbit
Clonality	Monoclonal
Isotype	Rabbit IgG
Purification	Affinity-chromatography
Applications	WB FC
Species Reactivity	Human Mouse Rat
Specificity	Oligodendrocyte Specific Protein Antibody detects endogenous levels of total Oligodendrocyte Specific Protein
Immunogen Description	A synthesized peptide derived from human Oligodendrocyte Specific Protein
Other Names	Claudin 11; CLD11_HUMAN; Cldn11; OSP; OTM;
Accession No.	Uniprot:O75508
Uniprot	O75508
Calculated MW	22kDa
Formulation	Rabbit IgG in phosphate buffered saline , pH 7.4, 150mM NaCl, 0.02% sodium azide and 50% glycerol.
Storage	Store at +4Λ C short term. Store at -20Λ C long term. Avoid freeze / thaw cycle.

## Application Details

WB:1:500~1:2000FC:1:100

## Images



Western blot analysis of Oligodendrocyte Specific Protein expression in SH-SY5Y cell lysate.

## Product Description

Plays a major role in tight junction-specific obliteration of the intercellular space, through calcium-independent cell-adhesion activity.

---

Note: This product is for in vitro research use only