

Mesothelin Rabbit mAb

Catalog No: #56344

Package Size: #56344-1 50ul #56344-2 100ul

Orders: order@signalwayantibody.com

Support: tech@signalwayantibody.com

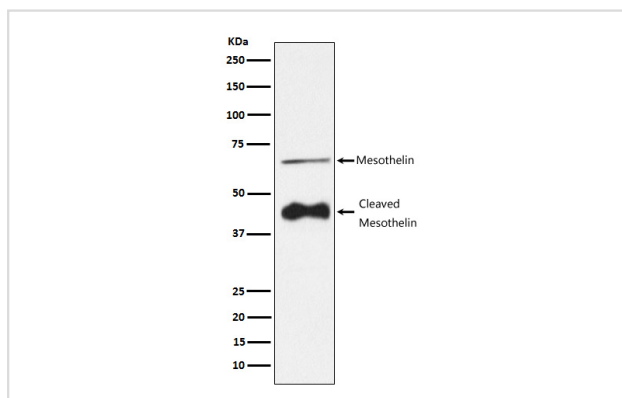
Description

Product Name	Mesothelin Rabbit mAb
Host Species	Rabbit
Clonality	Monoclonal
Isotype	Rabbit IgG
Purification	Affinity-chromatography
Applications	WB IHC IP
Species Reactivity	Human
Specificity	Mesothelin Antibody detects endogenous levels of total Mesothelin
Immunogen Description	A synthesized peptide derived from human Mesothelin
Other Names	CAK1; Mesothelin; MPF; Msln; SMR; SMRP;
Accession No.	Uniprot:Q13421
Uniprot	Q13421
Calculated MW	69,40kDa
Formulation	Rabbit IgG in phosphate buffered saline , pH 7.4, 150mM NaCl, 0.02% sodium azide and 50% glycerol.
Storage	Store at +4 Λ C short term. Store at -20 Λ C long term. Avoid freeze / thaw cycle.

Application Details

WB: 1:500~1:2000 IHC: 1:100~1:500 IP: 1:50

Images



Western blot analysis of Mesothelin expression in HeLa cell lysate.

Product Description

Membrane-anchored forms may play a role in cellular adhesion.

Note: This product is for in vitro research use only