

Glycophorin C Rabbit mAb

Catalog No: #56345

Package Size: #56345-1 50ul #56345-2 100ul

Orders: order@signalwayantibody.com

Support: tech@signalwayantibody.com

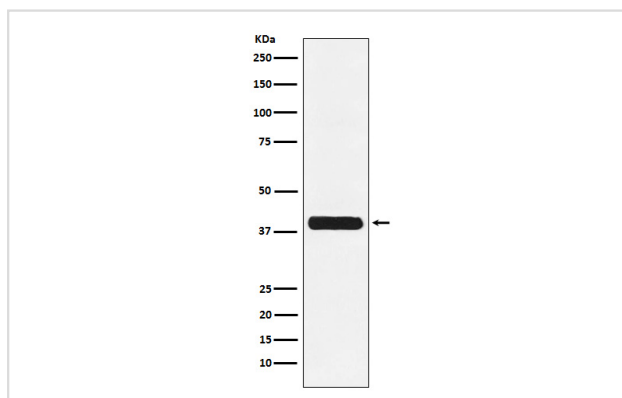
Description

Product Name	Glycophorin C Rabbit mAb
Host Species	Rabbit
Clonality	Monoclonal
Isotype	Rabbit IgG
Purification	Affinity-chromatography
Applications	WB IHC ICC/IF IP FC
Species Reactivity	Human
Specificity	Glycophorin C Antibody detects endogenous levels of total Glycophorin C
Immunogen Description	A synthesized peptide derived from human Glycophorin C
Other Names	GYPC; CD236; CD236R; GE; GPC; GYPD;
Accession No.	Uniprot:P04921
Uniprot	P04921
Calculated MW	39kDa
Formulation	Rabbit IgG in phosphate buffered saline , pH 7.4, 150mM NaCl, 0.02% sodium azide and 50% glycerol.
Storage	Store at +4 Λ C short term. Store at -20 Λ C long term. Avoid freeze / thaw cycle.

Application Details

WB:1:500~1:2000IHC:1:50~1:200ICC/IF:1:50~1:200IP:1:50FC:1:50

Images



Western blot analysis of Glycophorin C expression in K562 cell lysate.

Product Description

This protein is a minor sialoglycoprotein in human erythrocyte membranes. The blood group Gerbich antigens and receptors for Plasmodium falciparum merozoites are most likely located within the extracellular domain.

Note: This product is for in vitro research use only