

## PHOX2B Rabbit mAb

Catalog No: #56349

Package Size: #56349-1 50ul #56349-2 100ul

Orders: order@signalwayantibody.com

Support: tech@signalwayantibody.com

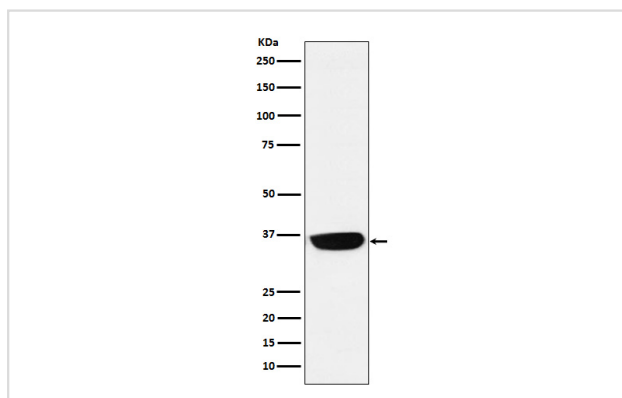
## Description

Product Name	PHOX2B Rabbit mAb
Host Species	Rabbit
Clonality	Monoclonal
Isotype	Rabbit IgG
Purification	Affinity-chromatography
Applications	WB IHC ICC/IF
Species Reactivity	Human Mouse
Specificity	PHOX2B Antibody detects endogenous levels of total PHOX2B
Immunogen Description	A synthesized peptide derived from human PHOX2B
Other Names	NBLST2; NBPhox; PHOX 2B; PHOX2B; PMX 2B; PMX2B;
Accession No.	Uniprot:Q99453
Uniprot	Q99453
Calculated MW	35kDa
Formulation	Rabbit IgG in phosphate buffered saline , pH 7.4, 150mM NaCl, 0.02% sodium azide and 50% glycerol.
Storage	Store at +4Λ C short term. Store at -20Λ C long term. Avoid freeze / thaw cycle.

## Application Details

WB:1:500~1:2000IHC:1:100~1:500ICC/IF:1:50~1:200

## Images



Western blot analysis of PHOX2B expression in Neuro-2a cell lysate.

## Product Description

Involved in the development of several major noradrenergic neuron populations, including the locus coeruleus. Transcription factor which could determine a neurotransmitter phenotype in vertebrates. Enhances second-messenger-mediated activation of the dopamine beta-hydroxylase and c-fos promoters, and of several enhancers including cAMP-response element and serum-response element.

---

Note: This product is for in vitro research use only