

TRAP Rabbit mAb

Catalog No: #56352

Package Size: #56352-1 50ul #56352-2 100ul

Orders: order@signalwayantibody.com

Support: tech@signalwayantibody.com

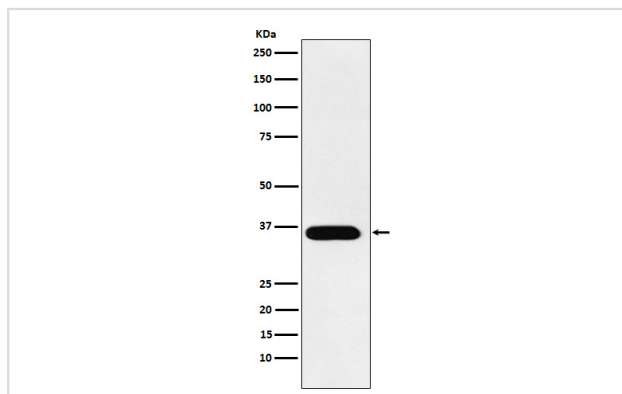
Description

Product Name	TRAP Rabbit mAb
Host Species	Rabbit
Clonality	Monoclonal
Isotype	Rabbit IgG
Purification	Affinity-chromatography
Applications	WB IHC ICC/IF IP
Species Reactivity	Human Mouse Rat
Specificity	Tartrate Resistant Acid Phosphatase Antibody detects endogenous levels of total Tartrate Resistant Acid Phosphatase
Immunogen Description	A synthesized peptide derived from human Tartrate Resistant Acid Phosphatase
Other Names	TRAP; SPENCDI; TrATPase;
Accession No.	Uniprot:P13686
Uniprot	P13686
Calculated MW	35,42kDa
Formulation	Rabbit IgG in phosphate buffered saline , pH 7.4, 150mM NaCl, 0.02% sodium azide and 50% glycerol.
Storage	Store at +4 Λ C short term. Store at -20 Λ C long term. Avoid freeze / thaw cycle.

Application Details

WB:1:500~1:2000IHC:1:50~1:200ICC/IF:1:50~1:200IP:1:50

Images



Western blot analysis of Tartrate Resistant Acid Phosphatase expression in A431 cell lysate.

Product Description

Involved in osteopontin/bone sialoprotein dephosphorylation. Its expression seems to increase in certain pathological states such as Gaucher and Hodgkin diseases, the hairy cell, the B-cell, and the T-cell leukemias.

Note: This product is for in vitro research use only