

K Cadherin Rabbit mAb

Catalog No: #56356

Package Size: #56356-1 50ul #56356-2 100ul

Orders: order@signalwayantibody.com

Support: tech@signalwayantibody.com

Description

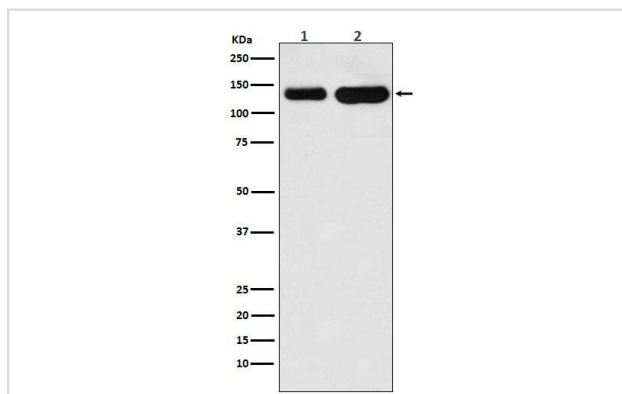
Product Name	K Cadherin Rabbit mAb
Host Species	Rabbit
Clonality	Monoclonal
Clone No.	36F3
Isotype	Rabbit IgG
Purification	Affinity-chromatography
Applications	WB IP
Species Reactivity	Human Mouse Rat
Specificity	K Cadherin Antibody detects endogenous levels of total K Cadherin
Immunogen Description	A synthesized peptide derived from human K Cadherin
Target Name	CDH6
Other Names	CAD6; Cdh6; K-cadherin; KCAD; Kidney cadherin;
Accession No.	Uniprot:P55285
Uniprot	P55285
Calculated MW	130kDa
Formulation	Rabbit IgG in phosphate buffered saline , pH 7.4, 150mM NaCl, 0.02% sodium azide and 50% glycerol.
Storage	Store at +4 Λ C short term. Store at -20 Λ C long term. Avoid freeze / thaw cycle.

Application Details

WB:1:500~1:2000

IP:1:50

Images



All Lanes:K Cadherin Antibody at 1/ 2000 dilution.Lane1:Jurkat cell lysate.Lane2: Mouse heart lysate.(Proteins at 20ug per lane)Secondary: Goat Anti-Rabbit IgG(HRP) at 1/20000 dilutionPredicted band size : 130kDaObserved band size: 130kDa

Product Description

Cadherins are calcium dependent cell adhesion proteins. They preferentially interact with themselves in a homophilic manner in connecting cells;

cadherins may thus contribute to the sorting of heterogeneous cell types.

Note: This product is for in vitro research use only