

Cathepsin S Rabbit mAb

Catalog No: #56363

Package Size: #56363-1 50ul #56363-2 100ul

Orders: order@signalwayantibody.com

Support: tech@signalwayantibody.com

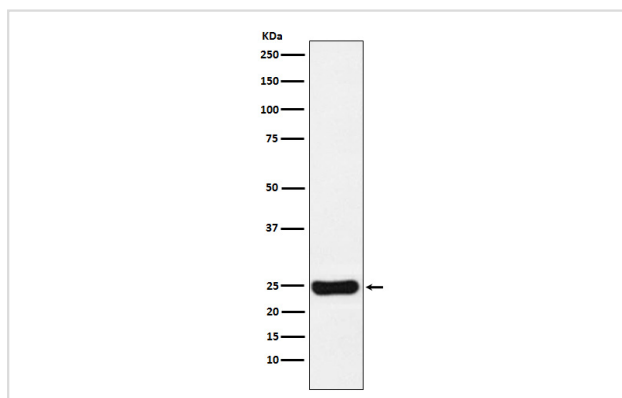
Description

Product Name	Cathepsin S Rabbit mAb
Host Species	Rabbit
Clonality	Monoclonal
Isotype	Rabbit IgG
Purification	Affinity-chromatography
Applications	WB IHC ICC/IF
Species Reactivity	Human
Specificity	Cathepsin S Antibody detects endogenous levels of total Cathepsin S
Immunogen Description	A synthesized peptide derived from human Cathepsin S
Other Names	CTSS; Cathepsin S; Cat-s; CATS;
Accession No.	Uniprot:P25774
Uniprot	P25774
Calculated MW	25kDa
Formulation	Rabbit IgG in phosphate buffered saline , pH 7.4, 150mM NaCl, 0.02% sodium azide and 50% glycerol.
Storage	Store at +4Λ C short term. Store at -20Λ C long term. Avoid freeze / thaw cycle.

Application Details

WB:1:500~1:2000IHC:1:50~1:200ICC/IF:1:50~1:200

Images



Western blot analysis of Cathepsin S expression in U87-MG cell lysate.

Product Description

Thiol protease. Key protease responsible for the removal of the invariant chain from MHC class II molecules. The bond-specificity of this proteinase is in part similar to the specificities of cathepsin L and cathepsin N.

Note: This product is for in vitro research use only