

## LIMK1 Rabbit mAb

Catalog No: #56365

Package Size: #56365-1 50ul #56365-2 100ul

Orders: order@signalwayantibody.com

Support: tech@signalwayantibody.com

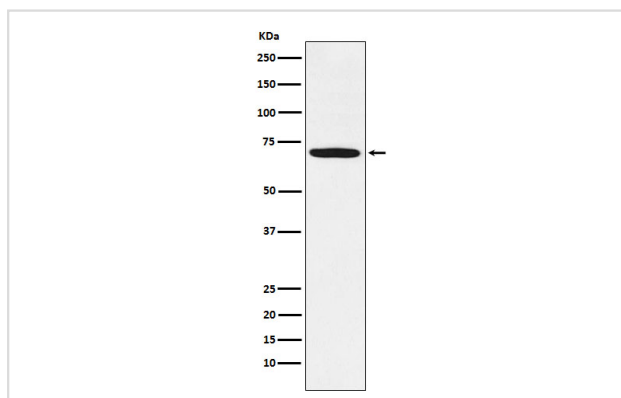
## Description

Product Name	LIMK1 Rabbit mAb
Host Species	Rabbit
Clonality	Monoclonal
Isotype	Rabbit IgG
Purification	Affinity-chromatography
Applications	WB
Species Reactivity	Human Mouse
Specificity	LIM Kinase 1 Antibody detects endogenous levels of total LIM Kinase 1
Immunogen Description	A synthesized peptide derived from human LIM Kinase 1
Other Names	LIM kinase; LIMK 1; LIMK;
Accession No.	Uniprot:P53667
Uniprot	P53667
Calculated MW	72kDa
Formulation	Rabbit IgG in phosphate buffered saline , pH 7.4, 150mM NaCl, 0.02% sodium azide and 50% glycerol.
Storage	Store at +4°C short term. Store at -20°C long term. Avoid freeze / thaw cycle.

## Application Details

WB: 1:500~1:2000

## Images



Western blot analysis of LIM Kinase 1 expression in U-87MG cell lysate.

## Product Description

Protein kinase which regulates actin filament dynamics. Phosphorylates and inactivates the actin binding/depolymerizing factor cofilin, thereby stabilizing the actin cytoskeleton. Stimulates axonal outgrowth and may be involved in brain development. Isoform 3 has a dominant negative effect on actin cytoskeletal changes.

---

Note: This product is for in vitro research use only