

TRF2 Rabbit mAb

Catalog No: #56367

Package Size: #56367-1 50ul #56367-2 100ul

Orders: order@signalwayantibody.com

Support: tech@signalwayantibody.com

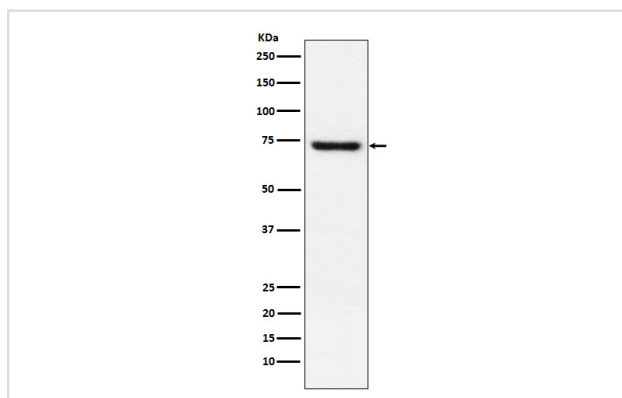
Description

| | |
|-----------------------|--|
| Product Name | TRF2 Rabbit mAb |
| Host Species | Rabbit |
| Clonality | Monoclonal |
| Isotype | Rabbit IgG |
| Purification | Affinity-chromatography |
| Applications | WB IHC ICC/IF |
| Species Reactivity | Human |
| Specificity | TRF2 Antibody detects endogenous levels of total TRF2 |
| Immunogen Description | A synthesized peptide derived from human TRF2 |
| Other Names | Terf2; TRBF2; TRF2; |
| Accession No. | Uniprot:Q15554 |
| Uniprot | Q15554 |
| Calculated MW | 66kDa |
| Formulation | Rabbit IgG in phosphate buffered saline , pH 7.4, 150mM NaCl, 0.02% sodium azide and 50% glycerol. |
| Storage | Store at +4 Λ C short term. Store at -20 Λ C long term. Avoid freeze / thaw cycle. |

Application Details

WB:1:500~1:2000IHC:1:50~1:200ICC/IF:1:50~1:200

Images



Western blot analysis of TRF2 expression in Jurkat cell lysate.

Product Description

Binds the telomeric double-stranded 5'-TTAGGG-3' repeat and plays a central role in telomere maintenance and protection against end-to-end fusion of chromosomes. In addition to its telomeric DNA-binding role, required to recruit a number of factors and enzymes required for telomere protection, including the shelterin complex, TERF2IP/RAP1 and DCLRE1B/Apollo.

Note: This product is for in vitro research use only