

Bub1 Rabbit mAb

Catalog No: #56369

Package Size: #56369-1 50ul #56369-2 100ul

Orders: order@signalwayantibody.com

Support: tech@signalwayantibody.com

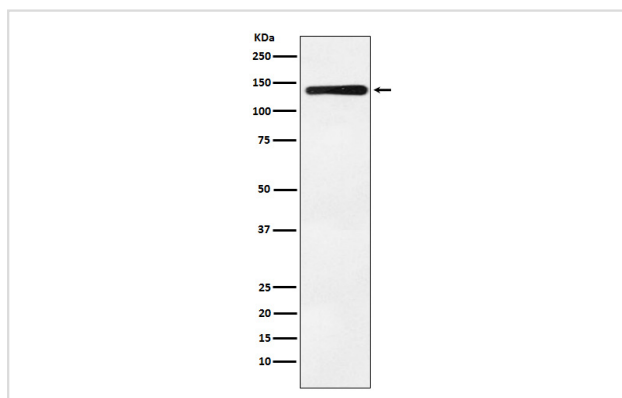
Description

Product Name	Bub1 Rabbit mAb
Host Species	Rabbit
Clonality	Monoclonal
Isotype	Rabbit IgG
Purification	Affinity-chromatography
Applications	WB IHC
Species Reactivity	Human Mouse Rat
Specificity	Bub1 Antibody detects endogenous levels of total Bub1
Immunogen Description	A synthesized peptide derived from human Bub1
Other Names	Bub1; BUB1A; BUB1L; hBUB1;
Accession No.	Uniprot:O43683
Uniprot	O43683
Calculated MW	122kDa
Formulation	Rabbit IgG in phosphate buffered saline , pH 7.4, 150mM NaCl, 0.02% sodium azide and 50% glycerol.
Storage	Store at +4Λ C short term. Store at -20Λ C long term. Avoid freeze / thaw cycle.

Application Details

WB:1:500~1:1000IHC:1:50~1:200

Images



Western blot analysis of Bub1 expression in K562 cell lysate.

Product Description

Serine/threonine-protein kinase that performs 2 crucial functions during mitosis: it is essential for spindle-assembly checkpoint signaling and for correct chromosome alignment. Has a key role in the assembly of checkpoint proteins at the kinetochore, being required for the subsequent localization of CENPF, BUB1B, CENPE and MAD2L1.

Note: This product is for in vitro research use only