

PAR6 Rabbit mAb

Catalog No: #56373

Package Size: #56373-1 50ul #56373-2 100ul

Orders: order@signalwayantibody.com

Support: tech@signalwayantibody.com

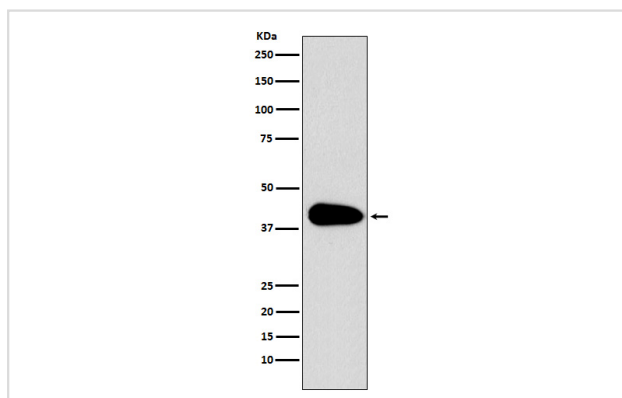
Description

Product Name	PAR6 Rabbit mAb
Host Species	Rabbit
Clonality	Monoclonal
Isotype	Rabbit IgG
Purification	Affinity-chromatography
Applications	WB IP
Species Reactivity	Human Mouse Rat
Specificity	PAR6 Antibody detects endogenous levels of total PAR6
Immunogen Description	A synthesized peptide derived from human PAR6
Other Names	PAR6; PAR6C; TAX40; PAR-6A; TIP-40; PAR6alpha;
Accession No.	Uniprot:Q9NPB6
Uniprot	Q9NPB6
Calculated MW	37kDa
Formulation	Rabbit IgG in phosphate buffered saline , pH 7.4, 150mM NaCl, 0.02% sodium azide and 50% glycerol.
Storage	Store at +4Λ C short term. Store at -20Λ C long term. Avoid freeze / thaw cycle.

Application Details

WB:1:500~1:2000IP:1:50

Images



Western blot analysis of PAR6 expression in Jurkat cell lysate.

Product Description

Adapter protein involved in asymmetrical cell division and cell polarization processes. Probably involved in the formation of epithelial tight junctions. Association with PARD3 may prevent the interaction of PARD3 with F11R/JAM1, thereby preventing tight junction assembly.

Note: This product is for in vitro research use only