

TIM1 Rabbit mAb

Catalog No: #56374

Package Size: #56374-1 50ul #56374-2 100ul

Orders: order@signalwayantibody.com

Support: tech@signalwayantibody.com

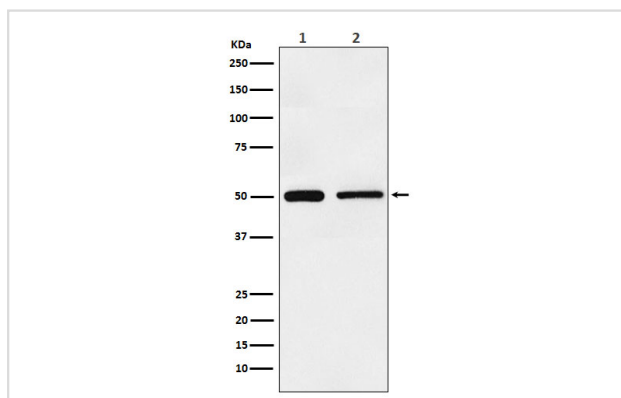
Description

Product Name	TIM1 Rabbit mAb
Host Species	Rabbit
Clonality	Monoclonal
Isotype	Rabbit IgG
Purification	Affinity-chromatography
Applications	WB
Species Reactivity	Human Mouse Rat
Specificity	TIM 1 Antibody detects endogenous levels of total TIM 1
Immunogen Description	A synthesized peptide derived from human TIM 1
Other Names	CD365; HAVCR 1; HAVCR; Havcr1; KIM 1; TIM; TIM1; TIMD1;
Accession No.	Uniprot:Q96D42
Uniprot	Q96D42
Calculated MW	50kDa
Formulation	Rabbit IgG in phosphate buffered saline , pH 7.4, 150mM NaCl, 0.02% sodium azide and 50% glycerol.
Storage	Store at +4 Λ C short term. Store at -20 Λ C long term. Avoid freeze / thaw cycle.

Application Details

WB: 1:500~1:2000

Images



Western blot analysis of TIM 1 expression in (1) HeLa cell lysate; (2) NIH/3T3 cell lysate.

Product Description

May play a role in T-helper cell development and the regulation of asthma and allergic diseases. Receptor for TIMD4 (By similarity). In case of human hepatitis A virus (HHAV) infection, functions as a cell-surface receptor for the virus. May play a role in kidney injury and repair.

Note: This product is for in vitro research use only