

Serotonin transporter Rabbit mAb

Catalog No: #56378

Package Size: #56378-1 50ul #56378-2 100ul

Orders: order@signalwayantibody.com

Support: tech@signalwayantibody.com

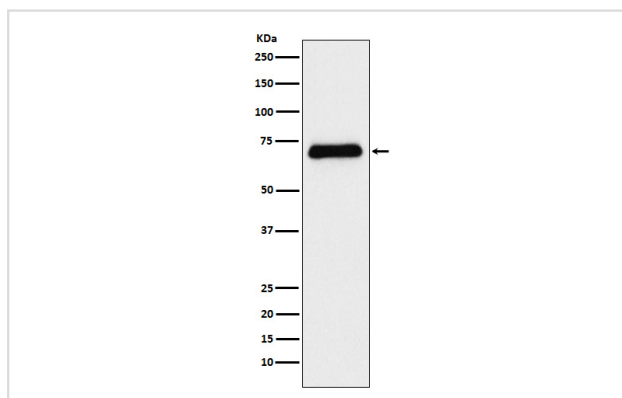
Description

Product Name	Serotonin transporter Rabbit mAb
Host Species	Rabbit
Clonality	Monoclonal
Isotype	Rabbit IgG
Purification	Affinity-chromatography
Applications	WB
Species Reactivity	Human Mouse Rat
Specificity	Serotonin transporter Antibody detects endogenous levels of total Serotonin transporter
Immunogen Description	A synthesized peptide derived from human Serotonin transporter
Other Names	SLC6A4; 5HTT; 5HT transporter; 5-HTT; 5-HTTLPR; OCD1; SERT; Serotonin transporter; HSERT; SERT1;
Accession No.	Uniprot:P31645
Uniprot	P31645
Calculated MW	70kDa
Formulation	Rabbit IgG in phosphate buffered saline , pH 7.4, 150mM NaCl, 0.02% sodium azide and 50% glycerol.
Storage	Store at +4Λ C short term. Store at -20Λ C long term. Avoid freeze / thaw cycle.

Application Details

WB: 1:500~1:2000

Images



Western blot analysis of Serotonin transporter expression in Human fetal liver lysate.

Product Description

Serotonin transporter whose primary function in the central nervous system involves the regulation of serotonergic signaling via transport of serotonin molecules from the synaptic cleft back into the pre-synaptic terminal for re-utilization. Plays a key role in mediating regulation of the availability of serotonin to other receptors of serotonergic systems. Terminates the action of serotonin and recycles it in a sodium-dependent manner.

Note: This product is for in vitro research use only