

## Sprouty 2 Rabbit mAb

Catalog No: #56379

Package Size: #56379-1 50ul #56379-2 100ul

Orders: order@signalwayantibody.com

Support: tech@signalwayantibody.com

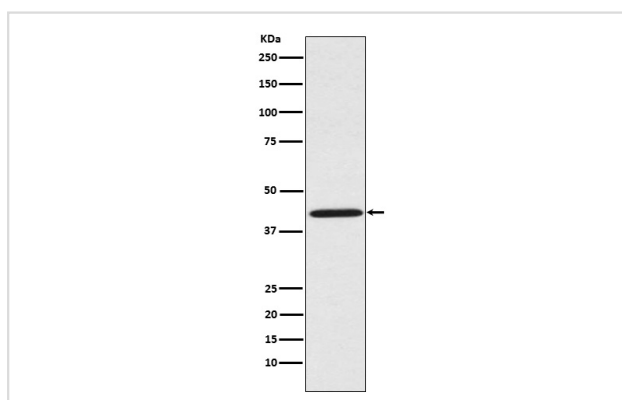
## Description

Product Name	Sprouty 2 Rabbit mAb
Host Species	Rabbit
Clonality	Monoclonal
Isotype	Rabbit IgG
Purification	Affinity-chromatography
Applications	WB IHC ICC/IF IP
Species Reactivity	Human Rat
Specificity	Sprouty 2 Antibody detects endogenous levels of total Sprouty 2
Immunogen Description	A synthesized peptide derived from human Sprouty 2
Other Names	hSPRY2; Sprouty2; SPRY2;
Accession No.	Uniprot:O43597
Uniprot	O43597
Calculated MW	42kDa
Formulation	Rabbit IgG in phosphate buffered saline , pH 7.4, 150mM NaCl, 0.02% sodium azide and 50% glycerol.
Storage	Store at +4Λ C short term. Store at -20Λ C long term. Avoid freeze / thaw cycle.

## Application Details

WB:1:500~1:2000IHC:1:50~1:200ICC/IF:1:50~1:200IP:1:50

## Images



Western blot analysis of Sprouty 2 expression in HeLa cell lysate.

## Product Description

May function as an antagonist of fibroblast growth factor (FGF) pathways and may negatively modulate respiratory organogenesis.

---

Note: This product is for in vitro research use only