

## Cytokeratin 6 Rabbit mAb

Catalog No: #56381

Package Size: #56381-1 50ul #56381-2 100ul

Orders: order@signalwayantibody.com

Support: tech@signalwayantibody.com

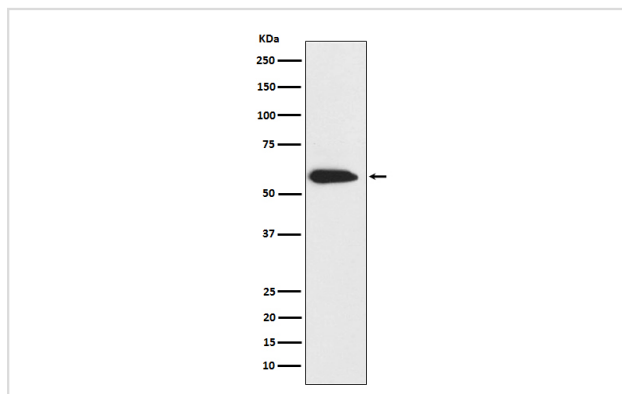
## Description

Product Name	Cytokeratin 6 Rabbit mAb
Host Species	Rabbit
Clonality	Monoclonal
Isotype	Rabbit IgG
Purification	Affinity-chromatography
Applications	WB IHC ICC/IF
Species Reactivity	Human
Specificity	CK6 Antibody detects endogenous levels of total CK6
Immunogen Description	A synthesized peptide derived from human CK6
Other Names	CK 6A; CK 6B; CK 6C; CK 6D; CK 6E; CK-6C; CK-6E; K6a keratin; K6b keratin; K6C; K6c keratin; K6d keratin; K6e keratin; Keratin; KRT6A; KRT6B; KRT6C; KRT6D; KRT6E;
Accession No.	Uniprot:P02538/P04259/P48668
Uniprot	P02538/P04259/P48668
Calculated MW	60kDa
Formulation	Rabbit IgG in phosphate buffered saline , pH 7.4, 150mM NaCl, 0.02% sodium azide and 50% glycerol.
Storage	Store at +4 $\Lambda$ C short term. Store at -20 $\Lambda$ C long term. Avoid freeze / thaw cycle.

## Application Details

WB:1:1000~1:5000IHC:1:50~1:200ICC/IF:1:50~1:200

## Images



Western blot analysis of CK6 expression in A431 cell lysate.

## Product Description

There are at least six isoforms of human type II keratin-6 (K6). There are two types of cytoskeletal and microfibrillar keratin, I (acidic) and II (neutral to basic) (40-55 and 56-70 kDa, respectively).

---

Note: This product is for in vitro research use only